

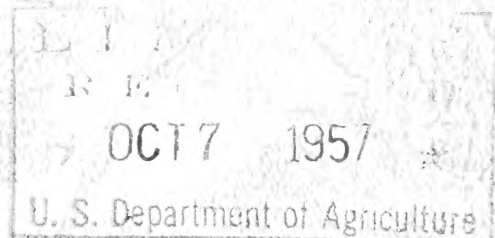
## **Historic, Archive Document**

Do not assume content reflects current scientific knowledge, policies, or practices.



62,55

# *Selected Iris Offerings* *for 1948*



- ★ Tall Bearded
- ★ Intermediates
- ★ Dwarfs
- ★ Hybrids (bearded)
- ★ Spuria



**TELL'S IRIS GARDENS**  
(Tell Muhlestein, hybridizer, introducer)  
691 East Eighth North  
PROVO, UTAH



1948

# *Tell's Iris Gardens*

(Tell Muhlestein, owner and hybridizer)

691 East 8th North — Provo, Utah



## *Foreword*

### *GREETINGS IRIS FRIENDS,*

Some of you are friends and customers whom I have known for several years, while many are reading my greetings for the first time.

I'm wondering what some of you will think when you view this unpretentious catalogue this year. Those who know me, of course, know my great love, in this iris fancy, is hybridizing; so you have the answer when you see these pages crowded with pedigrees and explanations of the merits of these lovely flowers as parents. I might tell you to beware-----it is contagious (this "disease" of hybridizing) for as one lady in Idaho wrote last year: "I just couldn't understand why you emphasized any iris' breeding qualities when it was the flower I wanted for my garden, but this year I could resist no longer---I have become an iris hybridizer and you can "bet" I'll select the parents from now on. Write some more about hybridizing and the good parents."

Some of you will recall that last year I gave some hints on breeding Wm. Mohr by opening the buds early (the day they are to open) and to pollinate all three stigmas before they have had a chance to dry. Well, several hybridizers wrote they had obtained their first seed from Wm. Mohr by using this method. I realize, of course, we cannot all give time and thought to hybridizing and the flower is sought for its own beauty, so those who are "seeking the flower" may not like my short and unpicturesque descriptions, but I have endeavored to discard from my garden, and this list, varieties lacking in quality. I believe you will find almost every offering in this catalogue to be a good iris. Some of course are better than others, and I have tried to give a frank and honest opinion of their beauty or worth as they have performed in my garden. Not only do I grow approximately ten thousand seedlings yearly, but I try to keep "up-to-date" with the best of the new introductions and many varieties are grown here "on trial" even several years before their introduction, so I think living with them as I do and having to discard severely, one learns to appraise the worth of any iris---old or new. Some varieties do better here than others, but we can grow them all even to the species *oncocyclus* so our judgment is in no way stunted. Anyone dislikes buying a new iris, thinking that a high price must make it good, only to find that some old timer "beats it every way for Sunday." I not only find this true, but very often I have discarded hundreds of seedlings better than some of the new ones, and I cannot sell these inferior sorts just to get my money back, for it will cause "heart-aches" elsewhere, and I know that I shall make more in the long run by the good things

as they increase, and of course my own introductions, and the iris my friends wish to have me introduce for them. I shall always try to weed out the poor, so you may depend on my judgment. Our introductions we want you to come to know as distinct and fine iris---otherwise you will lose faith in my opinion.

This year our list of introductions is quite long. Several of these iris I have hesitated to introduce, but the garden visitors want them, and I dislike selling an iris with a number for a name means so much more, therefore I am introducing them at a modest price with names and they will be grown and liked for their beauty, and their faults will not be seen by those who will see their beauty. But I will tell you their faults (even I like them still) and you may want them anyway.

Getting back to my "love," Hybridizing. We cannot say for a certainty just where the good ones will come or where some unusual break will appear. Clara Rees, the breeder of Snow Flurry crossed Purissima (a Tetraploid) with pollen of Thais (a Diploid) in the hopes of getting a ruffled lavender or lavender-white----one seed was born and one seedling grew: Snow Flurry, and although by standards this iris has faults it has such charm and personality, just to see it is to "love" it. Mary Rich Lyon x Midwest Gem gave me a shell pink seedling 44-67 and a big ruffled yellow that was named Gold Ruffles and introduced last year. Knowing Gold Ruffles to have this pink sister I used it as pod parent for a cross planned for pinks but using another yellow seedling from Alice Harding x Dr. Loomis' Type Dore (yellow S. white F. bordered yellow) a seedling of Dr. Loomis' original Sea Shell, and a pink seedling bloomed---a simply huge pale pink with domed standards and wide flaring falls---the substance so heavy each bloom lasted 5 and 6 days even in heat or rain, but the "darned" thing had no increase and I knew it was a "lost chord" so I set seed on it by my deepest pink (Pink Formal) and harvested a crop of about 150 seeds, so perhaps this flower did not bloom in vain and maybe one of its children will prove as good, but it was an iris one dreams about.

Last January 4th I spent part of the day with Mrs. Fitzpatrick of San Diego (the breeder of Creamo) a lady who has been breeding iris some twenty five years. It was a delightful experience. Sometimes our iris friends have as much charm as the flowers we have taken to our hearts, and surely these friends make our lives much richer and happier always, of course, with the cream of their hybridizing. On January 6th and 7th I spent time with Mr. and Mrs. Thomas Craig of Los Angeles. Anyone from a snow-bound state would relish such a treat. Tom (everyone calls him Tom) grows "everything" in the flora world. There were hundreds of camellias of every size, shape and color, fields of rare daffodils, and of course acres of iris. Drifts of China Maid everywhere, and everywhere in bloom. Many of Tom's seedlings were blooming and from this off-season bloom I could see he has some fine things which we will all enjoy growing. Tom has a great love for the *Oncocyclus* species and their hybrids. His work along this line looks astounding when one considers the difficulty of their breeding. A lovely blue opened the day I left, a cross of Mountain Sky x Chivalry; wide and ruffled in parts. He had a seedling with some sort of extra petaloid hanging from the crest, just below the beard, of each fall. So you see the surface has just been scratched. New breaks will come, and who knows the do-dads, the gadgets, the doubling and the stream-lining we may yet accomplish.

Some breeders are working for a green iris. I have had several quite green, and up to 1945 discarded them not fully realizing their possibilities. In 1946 there bloomed a green-chartreuse-white from a cross of Snow Flurry x 44-1: (Genevieve Serouge x Mount Cloud) which I have since registered Greenglow and I

feel it is a step forward in the green direction and hope to introduce it next year along with its white sister Glistenglow.

Last spring, there bloomed among our plants of N. J. Thomas a large blackish-purple with the form still similar to N. J. Thomas, but even better. At first we thought some other rhizomes has been planted with this variety by mistake, however, at last it "dawned" on us that here was a variety---a true sport, and luckily this sport sets seed with ease and the pollen is very fertile. What it will do in breeding still remains to be seen, however, Mrs. Crosby and I both used it in crosses. I have registered this sport as Sporting Thomas and hope to introduce it next year. The only iris I know even approaching its coloring is, perhaps, The Black Douglas, and speaking of this variety here is an iris overlooked for its breeding qualities in the black-purples. The Black Douglas together with Sable, Storm King and Black Forest should give us ever increasing dark irises.

Well, I have rambled much, saying very little, really, but you may find some helpful hints in the catalogue and the descriptions. I should, perhaps, describe the long narrow box I use as a "pollen file" which I find most helpful in my hybridizing work. As you know iris pollen kept dry will remain fertile for at least six weeks under ordinary room temperatures. Our state is not humid so I do not find it necessary to keep the pollen in vials or capsules. I would say, however, to those who wish to ship pollen or keep it in capsules the stamens with the pollen on should be dried thoroughly before they are put into air-tight capsules or envelopes, otherwise the moisture from the stamens will spoil the pollen. Of Course the dry pollen may be scraped off into the capsules, but I like to use the stamens in the process of pollinating. I do not feel a brush should be used. A brush is so easily contaminated with other pollen grains from previous hybridizing work. The small box is approximately two inches wide and three inches tall. The length may be governed by the vastness of one's hybridizing plans. Of course, if you only use a dozen envelopes to keep pollen, a file is not necessary---a pocket on shirt or apron will do, but hundreds of envelopes may require a box well over a foot in length. Half sheets of typing paper are folded into open-topped envelopes and then pollen (on the stamens) gathered as the flowers bloom---the envelopes marked and filed chronologically, whether named or numbered. Ordinarily pollinating a fresh flower in the morning, or early afternoon, only one stigma need be pollinated to obtain a full pod, however, with difficult parents like Wm. Mohr and its derivatives I cross on all three stigmas in the hopes that some pollen grains will reach their destination. If one wishes to be "extra sure" no outside source will contaminate a cross the falls should all be removed as well as the stamens (if they have pollen, and some varieties like Purissima and Snow Flurry have no pollen) for we have found the ordinary yellow pollen thrip will crawl up on the stigma leaving some pollen grains and many "takes" are had, especially in the late part of the season when pollen thrips have reached their "peak." Some sections of the country have the Bumble bee to worry about. Only rarely do we see one in Provo. Of course with nicotine sulphate and D.D.T. sprays the thrip problem can be eliminated. D.D.T., too, by the way, is highly recommended by Dr. Fraim and Mrs. Lowry to destroy the iris borer. Fortunately, we in Utah do not have this pest to contend with. Oh, yes, on my blunt tweezers, which I use to gather the stamens, I tie a long white string, for those tweezers have a way of dropping or becoming lost. If a string is attached it's easy to pull out of a pocket, find if on the ground, or in the grass.

I think you will like our new introductions including the fine Spuria; Fairy Light, produced by Mr. Herman Thorup of Salt Lake City. Spurias should be-

come increasingly more popular for they are of easy culture (thriving in almost any garden soil), require very little care and make wonderful protection against soil erosion. Their blooms are truly Orchid-like and their tough substance make them desirable as cut flowers or for corsages. Spurias resist diseases of all kind. They offer a good opportunity to those interested in hybridizing, for the present color-range is rather limited.

Last season I had many requests for good iris seed, so I have decided to offer seed from select parents at a reasonable price, with the hopes that when "super-dupers" bloom among the seedlings produced from this seed that I may be privileged to grow them here on trial or for possible introduction. I have reached the point where my ground here in the city is pretty well taken up with seedlings, and of course I do want to increase the stocks of those I select for introduction, so less and less space can be given, each year, to seed. With my experience (and I learn much by mistakes) I believe I can offer you seed that you may be five to ten years getting by the usual process of purchasing new introductions and breeding your own line of seedlings, for I have worked almost every color in iris and believe I have some fine parents in pinks, reds, whites, yellows, plicatas, oranges, (true orange-sherbet colors), exquisite blends, and of course blues and lines of greens and chartreuse. If at all possible I shall be glad to make special crosses for you, but you may rely on my judgment to use some of my seedlings which might put you years ahead if I find some cross you have selected will not take, or the parent or parents, lack pollen. In the pinks I will use my new introductions and some new 1946, 1947 and 1948 seedlings, all of which stem from either Melitza, David Hall's flamingo pinks, Dr. Loomis' Sea Shell lines or my own 44-67. Most of the pinks I have kept for breeding have quite good form and many of them have wide flaring falls with extremely heavy substance. In the reds I have seedlings from Bryce Canyon, Garden Glory, Flamely, Casa Morena, Ouray, and a most lovely one # 47-45, which will be named from Mandalay x 45-12 (E. B. Williamson x Prairie Sunset) a rose-red self with flaring falls. Arab Chief x 45-12 gave me fine oranges and blends. Arab Chief x Bryce Canyon gave several very brilliant red-coppers--one of which has been named The Showman, and will be introduced as soon as I can build up a small stock. I will be glad to use some of these as parents for you should you desire seed. I'll be able to use almost every iris listed in this catalogue as a parent should you desire any special cross, or crosses, but I must have your list of crosses and approximate number of seed wanted from each cross before the first of May. I will make all the crosses personally, for this year I have much of the seed from 1947 crosses still unplanted due to bad weather last fall and a lack of considerable space, but this seed will be planted next October if all goes well.

Again I would like to hear from any of you who may have bred a seedling from Wm. Mohr, and I should be happy to exchange such seedlings with you or grow your things here on trial, and you may be assured all the stock will be at your command. I have hundreds of guests from friends all over the United States, England and Australia. Perhaps the good ones will some day adorn your gardens. Best wishes to all of you for a good iris season in 1948, and good plans for 1949.

I am,

Very sincerely,

TELL MUHLESTEIN.

P. S.

Some varieties not carried in this 1948 catalogue are still being grown by Mrs. Crosby, so if any of you want certain varieties for your garden or for breeding work they may be had at standard prices.



# Our 1948 Introductions

This year I am offering seventeen new iris. All of these were bred in Region 12. One coming from Albuquerque, New Mexico, the others from Salt Lake City, and of course my own productions from Provo. Mr. Thorup has, this year, given us something unusual in his Fairy Light spuria, and what we believe to be his masterpiece, Helen Fitzgerald. Mr. Carl Larsen selected a seedling from Aldura for introduction: Blue Rim. From this and Blue Shimmer may come our long-sought-for pure blue. Mr. C. J. Paul produced a seedling from Wm. Mohr x Alta California which he has had appropriately named Altamohr which I think will be a good grower and surely should give plicata seedlings, for Alta California is plicata-bred. Mr. Clarke's Anita Catherine (Purissima x Mohrson) has received high praise from several judges. It has been likened to the color of Helen McGregor with the shape of Dr. Loomis' Spanish Peaks. It should prove a popular variety and its blood makes it doubly interesting. Anita Catherine may be seen in the gardens of Wm. J. McKee, Paul Cook and Clarence M. Ellis this spring on two year plants. My own introductions are seedlings that have been admired in my garden for two or three seasons. The stock of some is scarce and I have adjusted prices accordingly. I am offering my first dwarf production Little Elsa, so named because it is somewhat the same color as Elsa Sass, hardly comparable, however it has nice form, and we need new and better dwarfs. My work along this line is improving and I will have others to offer that may prove "stepping stones" to better dwarf bearded iris.

ALTAMOHR (C. J. Paul) (Wm. Mohr x Alta California) Large flaring orchid-violet similar to, but a little pinker than, Ormohr. Tall stems about 38 inches or more with one branch only, ordinarily, with 4 to 6 buds. Sets seed and has pollen. .... Each \$10.00

ANITA CATHERINE (S. C. Clarke) (Purissima x Mohrson) Large waved, very pale blue self with bluer styles. Beard blue-tipped Cadmium yellow. Typical pallida stem. Should be a wonderful parent. Altogether a lovely iris. .... Each \$15.00

ARCTIC GOLD (Muhlestein) (Arctic x Sungold) Huge clean yellow the color of Sungold with the form of Arctic, but larger. Wonderfully branched stem with many buds. It blooms very early, and over a long period of time. Arctic Gold should grow especially well in milder climates. Height 42 inches or more. .... Each \$5.00

BLUE RIM (C. Larsen) ((Purissima x Alameda) x (Aldura) Large white ground plicata with a blue rim. The blue is even bluer than in Blue Shimmer, but the markings not so heavy. The falls are big, wide, and very round. Height 36 inches. Good branching. H. C. 1947 under number 12-d-39. Limited stock. .... Each \$20.00

BROWN STAIN (Muhlestein) (Grand Canyon x Stained Glass) A large red-brown self. So far the stalks have been short--about 30 inches. Sets seed with difficulty and the pollen isn't very fertile. I should like to see seedlings from this and some of the Arab Chief x Bryce Canyon seedlings I have. Certificate of Commendation 1947 under number 46-17 W ..... Each \$15.00

DEEP BUTTERCUP (Muhlestein) (Brown Betty x Golden Eagle) This is the biggest yellow in the garden. A very clear, clean color without any orange cast. The huge buds look like "gobs" of yellow wax. The stems are tall and wiry. Because of the size of these huge blooms the weight of the top flower and buds very often bend tops of its stems, but in spite of this fault I think you will like this different yellow. Its 1/4th Oncocyclus blood makes it fascinating, too. It sets seed and the pollen is extremely fertile, especially on the "Mohr strain" and other hybrids. H. C. 1947. .... Each \$15.00

- HELEN FITZGERALD (H. Thorup) ((Purissima x Wasatch) x ((Dolly Madison x W. R. Dykes) x (Souv. de Madam Gaudichau x Ricardi)) Named for a charming lady, and well worthy of the name. Here is a color we need badly, a true Lobelia Violet (Ridgeway), and a self. The blooms are very large, wide and full in parts. The beard is inconspicuous, light yellow. Some ruffling adds to the beauty of the flower. Helen Fitzgerald was one of the hits of the Salt Lake Iris show. One judge said: "I don't believe any of us realize how good an iris Helen Fitzgerald really is." Not yet distributed out of Utah. Stock is very scarce, but I cannot hold it back another year. H. C. 1947. .... Each \$25.00 Net.
- MERRY ROSE (Muhlestein) (Lancaster x Daybreak) Very large, smooth rose-pink self. Branching is high and rather poor, but almost every garden visitor wants it. Has quite a lot of garden value. 38 inches high. Produces some smooth seedlings with good branching ..... Each \$5.00
- MIST GLOW (Muhlestein) (Sundust x Radiant) We are all working for an amoena. Here is a different one. White standards, pale violet falls with some gold reticulations. Height 56 inches. .... Each \$10.00
- NIGHT LIFE (Muhlestein) (Storm King x Sable) Tall, large dark blackish-purple with a rich mulberry undertone which gives it considerable carrying power in the garden. Early. Height 38 inches. Excellent branching. .... Each \$20.00
- PINK SALMON (Muhlestein) (Spindrift x Golden Eagle) A rich, clean salmon-pink self. Falls are wide and flare horizontally. About the same height and size as Spindrift, but a clean flower. This has garden value. Many of the pinks are so pale as to have little value from a distance. A tangerine bearded pink I think you will like. Early. .... Each \$20.00
- PINK TOWER (Muhlestein) (Golden Eagle x Dr. Loomis' S. Q. 72) This is the largest pink iris I have bred to date. It is well branched, about 40 inches tall and the flowers are a clean pale pink self. It is deeper than its parent S. Q. 72 with better form. The falls are wide and down-hanging, with a tangerine beard. Very vigorous. Certificate of Commendation 1947. .... Each \$20.00
- RADIANT COMMAND (Muhlestein) (Radiant x Royal Command) This is a nice clean light colored neglecta - -lighter than ordinarily, but very bright. Light lavender-blue standards and darker falls. Very fertile on the "Mohr" family. A good stock since this was a 1944 seedling selection. # 44-66. .... Each \$5.00
- STAG AT EVE (Muhlestein) (Chosen x Prairie Sunset) A huge golden russet self with gold dust sprinkled all over it. Some of the buds turn in as with Prairie Sunset, but I think it is an advance in buckskin colors. Height 40 inches. Good branching. .... Each \$10.00
- UTAH FIESTA (Muhlestein) (Fiesta x Dubrovnik) Here is a brilliant border iris in tones of rich blended orange and yellow. The falls have a slight metallic lavender flush. Height 30 inches. .... Each \$5.00
- LITTLE ELSA (Muhlestein) (Brautjungfer: "Bridesmaid" x Bride). Lemon-yellow dwarf. Falls deeper yellow shading lighter toward center and lower parts. Falls semi-flaring. Blooms early and over a long period. Height 8 inches. .... Each \$2.00 — 5 for \$5.00
- FAIRY LIGHT (Thorup) (Shelford Giant x yellow spuria) Here is a delightful Spuria. Standards and styles white, slightly flushed lemon-chrome color in base of standards. Falls flaring and ruffled; color lemon-chrome (Ridgeway) with one eighth inch margin of clean pure white. It is a new departure in coloring, and altogether enticing. Here the spurias bloom after the tall bearded iris are gone. They make good garden subjects, grand cut flowers and ideal corsages. Their tough rhizomes and roots are splendid for holding banks against erosion. Barnyard manure is their best fertilizer. Rhizomes of Fairy Light will be shipped in September. .... Each \$10.00

# Tell's Iris Gardens - 1948



- ACADIA** (Tompkins 1946) (Honeyflow x Col-oratura) Wide, rich deep lemon yellow \$5.00
- ACE HIGH** (Lyell 1945) (California Gold x Happy Days) Clean bright yellow with light area in falls ..... \$2.50
- ACROPOLE** (Cayeux 1939) (Fakir x San Fran-cisco) Plicata ..... \$2.00
- ACTION FRONT** (P. Cook 1942) (Sdls from Morning Splendor, Seminole, Cinnabar x E. B. Williamson) A good new red ..... \$2.50
- ADELANTO** (DeForest 1941) (Druid x Alta California) x (Naranja) Striking, Tall, gold-  
en yellow-ochre and Buckthorn brown .... \$1.00
- ADMIRATION** (K. Smith 1946) (Aubanel x X-76) x (k-118: Chosen x Yellow Glory) Splen-  
did new yellow. H. M. 1947 ..... \$12.50
- ADVANCE GUARD** (Mitchell 1945) (Midwest x San Francisco) Plicata from a difficult cross. Said to be a fine parent for plics ..... \$2.00
- ADVENTURE** (Grant 1941) (from Mary Ged-des) Yellow plicata marked rosy-brown .. \$1.00
- AGLOWING** (Horton 1945) (Golden Hind x Golden Treasure) A most brilliant showy yel-  
low ..... \$10.00
- ALADDIN'S WISH** (Murawska 1945) (Buech-  
ley Giant x Pluie d'or) Blue brushed gold. Unusual and charming. Plant with yellows. .... \$5.00
- ALASTOR** (Splendor 1940) (two seedlings) Cy-clamen pink with brilliant orange beard. A. M. 1941 ..... \$1.00
- ALBA SUPERBA** (J. Sass 1943) (Snowking x sdlg: Sdlg x Happy Days) Huge white that may be an interesting parent for pinks. Scarce ..... \$7.50
- ALDURA** (Larsen 1945) ((Don Juan) x (Titan x San Francisco)) x (Wasatch). Blue and white plicata with exceptionally fine form and sub-  
stance. Aldura is a remarkable parent of qual-  
ity seedlings. H.M. 1947 ..... \$1.50
- ALLUMEUSE** (Gage 1938) (Dorothy Dietz x Sir Michael) Wisteria violet S. pansy violet falls. Should be a good parent for amoenas. .... .50
- ALPINE GLOW** (Kleinsorge 1945) Mexico x red sdlg. 296: 240 x E. B. Williamson) Rose-  
violet blend. H. M. 1946 ..... \$5.00
- ALTA ROSA** (White 1937) (Brown Betty x) Rose-lavender washed bronze. 1/4 Onco .. .50
- ALTAMOHR** (C. J. Paul 1948) (Wm. Mohr x Alta California) See 1948 Introductions. \$10.00
- ALWAYS** (White 1937) (Theme x Sacramento) Cream plicata marked bronze-purple. A good parent for plics and other colors ..... .50
- AMANDINE** (G. Douglas 1946) (White Prince x Caroline Burr) Cream with quality written all over it. Scarce. H. M. 1946 ..... \$15.00
- AMARANTH** (Whiting 1942) (Cheerio x Os-sar) Rosy purple self. Remarkable parent of Gypsy Rose and Campfire Glow ..... \$3.00
- AMBER GEM** (Salbach 1946) (Lost track) Chestnut-brown and gold. Big H. M. 1947 ..... \$10.00
- AMIGO** (E. B. Williamson 1934) (?) The one neglecta that everyone wants. A. M. 1938 ..... \$1.00
- AMITY** (Corey 1947) (Sensation x Los Angeles) x (Wambliska x San Francisco) "Fancy" or brushed white plicata. Should be a fine parent for blues, whites and plicatas. H. M. 1947 ..... \$5.00
- AND THOU** (Graves 1942) (Purissima x Nene) Palest Wedgwood-blue. Good. H. M. 1942 ..... \$2.50
- ANITA CATHERINE** (S. C. Clarke 1948) (Purissima x Mohrson) See 1948 Introductions. .... \$15.00
- ANGELUS** (Egelberg 1937) (Elizabeth Egelberg x Depute Nomblot) Light iridescent lavender pink. Like Depute N. it has fertile pollen but sets seed with difficulty. H. M. 1939 ..... .50
- ANITRA** (H. Sass 1936) (Purissima x Oriana) A light blue classic and a fine parent H. M. 1937 ..... .40
- ANNA WILLIAMSON** (P. Cook 1936) (Sis-  
ter to Majenica: Line of sdls x Rameses) Bi-  
colored pink blend. H. M. 1946 ..... \$7.50
- ANNE-MARIE BERTHIER** (Cayeux 1938) (Lost) Big green-white ..... \$1.00

- ANNE NEWHARD (Wiesner 1940) (?) Rich velvety bi-purple. H. M. 1944 ..... \$1.00
- APEX (Thompkins 1947) (Garden Glory x Jasper Agate) New broad-petaled smooth, brilliant red ..... \$15.00
- ARAB CHIEF (Whiting 1944) (Raejean x Garden Magic) Rich burnt orange self. (Arab Chief x Bryce Canyon gave me some remarkable brilliant seedlings.) It is a fine garden subject as well. H. M. 1946 ..... \$4.00
- ARCTIC (Kleinsorge 1940) (?) Creamy white brushed gold. .... .75
- ARCTIC GOLD (Muhlestein 1948) (Arctic x Sungold) See 1948 Introductions ..... \$5.00
- ARETHUSA (Gage 1940) (?) Huge daphne red and golden bronze. Showy, but plant in partial shade for it sunburns. H. M. 1937 ..... 60
- ARIENE (Cayeux 1935) (Chaldee x Fakir) All-over patterned and marked plicata ..... \$1.00
- ASHES OF ROSES (Kirkland 1940) (?) Beautiful smoky-rose ..... \$1.00
- ATROUS (Gage 1943) (purple sdlg x Modesta: Cheerio x Rosy Wings) Black-purple with burgundy undertone ..... \$5.00
- AUBURN (Kleinsorge 1945) (Prince of Orange x 258: Far West x Junaluska) Auburn-red blend with blue flush in falls. H. M. 1946 ..... \$10.00
- AUTUMN FLAME (H. Sass 1941) (From sdlgs from Morning Splendor x King Tut.) Purplish re-bloomer ..... \$2.00
- AUTUMN LEAF (Milliken 1945) (Brown Betty x Copper Lustre) Brown-blend ¼ Onco. .... \$1.50
- AUTUMN SUNSET (Lapham 1942) (Rosy Wings x Rameses) Rose, gold and lilac. A breeder for fall bloom ..... \$1.00
- AZALEA (Nesmith 1946) (Melitza x Leilani) New "congo" pink ..... \$15.00
- AZTEC COPPER (Far West x tan sdlg) Huge copper-tan blend. Fine parent of many things: Tobacco Road, Cape Bon, Honeyflow and others. Very fertile pollen for use on onco-hybrids. H. M. 1940 ..... \$1.00
- AZURE SKIES (Ida Pattison 1943) (Crystal Beauty x Snowking) Delightful ruffled light blue. A. M. 1945 ..... \$3.00
- BAGHDAD (Whiting 1946) (Garden Glory x Golden Spike) Deep yellow overlaid with metallic burnished brass. Baghdad can't miss as a fine parent for yellows, oranges and reds. .... \$15.00
- BALLET GIRL (H. Sass 1935) Delicate pink-white pallida ..... .50
- BALMUNG (H. Sass 1939) (from Yel. Plic. Sd. lgs.) Altogether a fine yellow Plicata. A. M. 1942 ..... \$1.50
- BANDMASTER (D. Hall 1944) (Blue sdlg x Great Lakes) Huge, clean, medium blue. H. M. 1944 ..... \$5.00
- BARBARA ELLEN (Gage 1942) (Allumeuse x Silvanus) Listed because of its amoena and neglecta blood. S. golden tan, F. hortense to amethyst violet ..... \$1.00
- BARRIMOHR (Wm. Miller 1944) (Wm. Mohr x Adobe) Large rich purple with brown undertone ..... \$5.00
- BATAAN (Kleinsorge 1942) (233: Purissima x Cameliard x?) x (Aztec Copper) Coppery plum, henna and rich brown ..... \$3.00
- BEAUTY SPOT (Walter Marx 1947) (Red dwarf x Hermione: R. C.) A true hybrid dwarf. Glowing plum purple ..... \$1.50
- BELMONT (T. Williams 1938) (Souv. de Mme. Gaudichau x Ann Page: trojana x Caterina) A good blue — Old but still satisfactory. Nothing wrong with the pedigree, either ..... .50
- BERKELEY GOLD (Salbach 1942) (Radiant x sdlg: Happy Gift x Natoma) Very satisfactory brilliant deep yellow. A. M. 1946. .... \$2.50
- BERTHA GERSDORFF (J. Sass 1942) (from Yellow plicata sdlgs) Novelty in yellow and rosy purple. Somewhat similar to my Dawn Overlay. Plant these near lemon yellows like Elsa Sass, Cool Lemonade and Mattie Gates to "set them off." ..... \$2.50
- BEVERLY (Lapham 1939) (No-we-ta x sdlg: Midgard x Aphrodite) A delicate pink pallida (24 chromosomes) ..... .50
- BILLOWY SEA (Great Lakes x Shining Waters) Fine blue lighter than Great Lakes. \$3.00
- BIRCHBARK (Kleinsorge 1940) (? undoubtedly descended from Purissima) One of the best finished whites ..... .50
- BLACK AND GOLD (Kleinsorge 1943) (descended from: Yakima, Cameliard, Burning Bronze, Purissima, Jean Cayeux and Crown Prince.) Fine variegata ..... \$5.00
- BLACK FOREST (Schreiner 1945) (Dymia x Ethiopie Queen) One of the darkest iris yet produced. H. M. 1946 ..... \$10.00
- BLACK HAWK (Schreiner 1941) (Lutin x Black Wings) A true intermediate. Black-purple ..... .75

- BLUE CROWN** (Washington 1945) (?) Blue Standards and white falls. Very slow of increase for me and no bloom in two seasons, but may bloom this year. .... \$6.00
- BLUE DIAMOND** (Nicholls 1938) (Miss Wilmot x Santa Barbara) One of the bluest iris introduced. It should make a wonderful parent, and I believe it worth protecting (although it has not been necessary here in Utah) for its own beauty as well as breeding possibilities. .... \$1.00
- BLUE FRILLS** (B. Stephenson 1946) (Aline x Missouri) Odd blue self. .... \$7.50
- BLUE MASCOT** (W. Marx 1947) (Reflection x Chamaeiris) Here is a true dwarf-bearded iris of lovely blue color and semi-flaring falls. .... .75
- BLUE PETER** (White 1936) (Acropolis x Modoc) Rich purple self. Should be a fine parent ..... .40
- BLUE RIM** (Larsen 1948) (Sldg: Purissima x Alameda x Aldura) See 1948 Introductions. .... \$20.00
- BLUE RHYTHM** (Whiting 1945) (Annabel x Blue Zenith) The blue that is receiving high acclaim from every part of the world. A. M. 1947 ..... \$10.00
- BLUE SHIMMER** (J. Sass Sdlg. 65-35 x Sdlg: Blue Monarch x Blue Hill) A most striking blue plicata. A. M. 1944 ..... \$4.00
- BLUE SPIRE** (Milliken 1939) (Purissima x Wistaria) A nice blue. Parent of my Mirror Lake. .... \$1.00
- BLUE VALLEY** (K. Smith 1947) (Lake George x Great Lakes) The new blue everyone is talking about. H. M. 1947 ..... \$25.00
- BLUE ZENITH** (Whiting 1942) (Blue Hill x Sierra Blue) Clear blue self. Pollen parent of Blue Rhythm. .... \$1.50
- BONANZA** (J. Sass 1939) (El Tovar x Sdlg: Jumbo x King Tut) Parent of my Cool Lemonade and Rare Marble. A yellow plic. .... .50
- BRIGHT LIGHTS** (Schreiner 1946) (Naranja x Siegfried) A yellow plicata in the manner of Tiffanja; a bit brighter. .... \$7.50
- BRIGHT MELODY** (Snyder 1941) (Melchoir x Pioneer) Concord grape-red not unlike her half sister Inspiration, but with more substance. A good parent, and a fine flower. H. M. 1945 ..... \$3.00
- BRILLIANT AMBER** (Salbach 1947) (Involved breeding) Golden brown and amber with a suggestion of pink. One judge wrote me: "This rings the bell." H. M. 1947 — Scarce \$15.00
- BRONZED COPPER** (Kleinsorge 1943) (Sister to Auburn) This will catch your eye. Coppery blend with blue flush on falls. .... \$2.50
- BRONZE IMAGE** (Kirkland-Williams 1940) (two sdlgs) Rich bronze-red with gold undertone. Alright. .... .75
- BROWN BETTY** (White 1934) (Mauna Loa x oncocylus) Sets seed and has fertile pollen. Pod Parent of my Deep Buttercup. A very good parent for many colors. Tender, however. .... .50
- BROWN BOY** (Salbach 1940) (Copper Lustre x Radiant) Showy. Somewhat improved Radiant. A fast grower. .... .75
- BROWN STAIN** (Muhlestein 1948) (Grand Canyon x Stained Glass) See 1948 introductions. C. of C. 1947. .... \$15.00
- BROWN THRASHER** (Kirkland 1941) (Copper Lustre x ) Light golden copper-brown. Hasn't been "sensational" here. A. M. 1943 ..... \$4.00
- BRYCE CANYON** (Kleinsorge 1944) (Mexico x Tobacco Road) Glowing henna-copper-brown. A remarkable parent both ways. Stock limited. A. M. 1947 ..... \$10.00
- BUDDHA** (Milliken 1945) (Sdlg: (Aurifero x Grace Sturtevant) x Chosen) x (Depute Nombot) Unusual is this huge brown blend. \$1.50
- BUFFAWN** (Andrews 1940) (Parentage unknown; Candlelight may be involved) Light buff blend with pink cast and a tangerine beard. .... .75
- BURGUNDY ROSE** (D. Hall 1946) (Victory x May Day) Large dark amethyst. Coarse on close inspection, but a knockout for garden value. .... \$7.50
- BURMESE GOLD** (Whiting 1945) (Sdlg: Happy Days x E. B. W.) x (Prairie Sunset) Beautiful, smooth, ruffled — gold and buff blend. A grand parent. .... \$10.00
- BURNISHED GOLD** (Kirkland 1940) (Sdlg: Aztec x Midas) x (Yel. Sdlg x W. R. Dykes) Yellow burnished with coppery overtone .. .50
- BUTTERCUP LANE** (D. Hall) (Sdlg: (Ramesses x Jean Cayeux) x (Salutation) x (Golden Hind) Deep Yellow with brilliant orange beard H. M. 1940 ..... \$1.00

- BUTTERFLY WINGS** (White 1946) ((Pink Jadu x Susiana) x (Theme x Sacramento)) Veined like the wings of a beautiful butterfly. Unusual, undoubtedly, because of Susiana blood. Sets seed. .... \$10.00
- CALIFORNIA PEACH** (Salbach 1941) (Natomia x Sdlg: Mary Geddes x Miss California) Peach, pink and apricot blend. H. M. 1941 ..... \$1.50
- CALIFORNIA TREK** (White 1941) (Incognito x Chosen) Good wide light yellow ..... \$1.50
- CAMEROUN** (Cayeux 1958) (?) Lustrous deep purple. .... \$1.50
- CANYON ROAD** (Kleinsorge 1946) (Oregon Trail x Sdlg: Old Parchment x Sdlg: Tuscany Gold x Rameses) Golden Copper-tan blend. .... \$7.50
- CAPE BON** (Thompkins 1945) (Aztec Copper x Veishea) Smoothly finished red with copper undertone. H. M. 1945 ..... \$25.00
- CAPISTRANO** (Tompkins 1947) (4 E 58: Wm. Mohr x Mussolini x Intermezzo: 4 E 58 x Sdlg: (Shining W. x Gloriole) x Far West) Rose and violet blended. An unusual iris doubling up on Wm. Mohr blood. .... \$7.00
- CAPITOLA** (Reinelt 1940) (Wm. Mohr x Ibmac) Larger and better formed Wm. Mohr type. Pollen parent of Lady Mohr and many of Prof. Jory's and Tom Craig's seedlings. H. M. 1947 ..... \$1.00
- CAPTAIN ROYAL** (Snyder 1944) (? my records show: (Tompkins' 4 E 58 x (Beote) x (El Capitan x Depute Nomblot) It is different in the Mosaic-blues. Fertile pollen and sets some seed. .... \$5.00
- CAPTAIN WELLS** (P. Cook) (Sdls from: Morning Sp., Seminole and Cinnabar x E. B. Williamson) Rich flaring black-maroon. Plant in partial shade. A. M. 1945 ..... \$2.50
- CARLSBAD CAVERNS** (D. Wilson 1946) (National White x Spun Gold) S. ruffled lemon F. White lined gold. Huge. Should be a fine parent for whites, creams and yellows. .... \$5.00
- CARNIVAL PARADE** (H. Sass 1946) (38-56 Yel. Plic. x 44-56 Yel. Plic.) Striking yellow and rose plicata; massive flowers open slowly. .... \$6.00
- CAROLINE BURR** (K. Smith 1940) (Easter Morn x Madam Maurice Lassailly) Large cream with chartreuse cast. Should breed Amoenas and neglectas. A. M. 1942 ..... \$2.00
- CARVED IVORY** (Essig 1956) (Sdls from Calif. Blue, Argentina, Conquistador, Miss Willmott and Sherbert) x W. R. Dykes) Fine Ivory. .... .50
- CASA MORENA** (DeForest) (Sdls from Morning Splendor, Germain Perthuis, Alta Calif. Rubco, Grace Sturtevant) x Prairie Sunset) Brilliant show of Burnt Sienna and chestnut. A. M. 1946 ..... \$6.00
- CASCADE SPLENDOR** (Kleinsorge 1945) (Mexico x Goldbeater) Large ruffled pink-tan and apricot blended. A. M. 1947 ..... \$10.00
- CEDAR ROSE** (Whiting 1941) (Matula x Summer Tan) Red-brown. A good breeder for blends. .... \$1.00
- CHAMOIS** (Kleinsorge 1944) (Mexico x Tobacco Road) Chamois self of superb quality. Scarce. H. M. 1945 ..... \$10.00
- CHANTILLY** (D. Hall 1945) (Maiden Blush x pink sdlg.) Orchid blend all tightly beruffled. Should go well with the shell pinks A. M. 1947 ..... \$7.50
- CHICORY BLUE** (G. Douglas 1942) (Shining Waters x Stella Polaris) Chicory blue self. H. M. 1942 ..... \$3.00
- CHIEF POKING FIRE** (DeForest 1942) (Sdlg: Alta Calif. x Jean Cayeux) x (E. B. Williamson) Big yellow-undertoned Red. .... \$2.00
- CHINA LADY** (Milliken 1944) (Sister to China Maid x Yel. Sdlg) Grand lemon-cream yellow. .... \$1.50
- CHINA MAID** Milliken 1956) (Mauna Loa x Dauntless) Big pink blend that is lovely en-mass. Especially fine in warm climates where it will re-bloom throughout the year. A. M. 1959 ..... .75
- CHIPPEWA** (Salbach 1945) (Orloff x Sdlg: (Seduction x Comstock) x Alta Calif.) Trim yellow plicata; cinnamon markings. .... \$1.25
- CHIVALRY** (J. Wills 1944) (Missouri x Great Lakes) Medium dark ruffled blue. A. M. 1946. Dykes Medal 1947. Scarce. .... \$15.00
- CHOIR BOY** (Schreiner 1947) Sdlg: (King Juba x Dorothy Dietz) x (Cantabile) Late blooming new amoena. .... \$5.00
- CHOSEN** (White 1957) (Sdlg: (Mirasol x Purissima) x Rubco) Large yellow. Fine parent for many colors including reds, blends and yellows. Very fertile pollen on Wm. Mohr. .... .50
- CHRISTABEL** (Lapham 1956) (Rameses x Jerry) Good standard red. A. M. 1941 ..... .50

- CHRYSOLITE** (Milliken 1941) (Easter Morn x Lady Paramount) Large cream with showy orange beard. .... \$1.00
- CIGARETTE** (Brehm 1946) (?) Pure pongee-cream self. Nice. .... \$7.50
- CITY OF LINCOLN** (H. Sass 1937) (Al-lu-we x?) Sister to Siegfried. Long the standard for variegatas. A. M. 1939 ..... .60
- CLARET VELVET** (Weed 1941) (?) Rich wine-purple border iris. Has anyone ever set seed on it? ..... \$1.00
- CLOTH OF GOLD** (Whiting 1945) (Golden Hind x Golden Spike) Tall bright yellow. H. M. 1947 ..... \$4.00
- CLOUD CASTLE** (Graves 1944) (Sensation x Gloriole) Wide light blue. Pollen parent of Helen McGregor. H. M. 1944 ..... \$5.00
- CLOVELLY** (Tobie 1940) (Easter Morn x Rose Dominion) Greenish-cream. Pod parent of Reveille. .... \$1.50
- COLOMA** (Essig 1946) (Mount Washington x China Lantern) New light yellow with darker standards and gold edge around falls. .. \$7.50
- COLORATURA** (DeForest 1946) (E. B. Williamson x Prairie Sunset) Russet, Orange-gold self. Use with Arab Chief, Baghdad, Honeyflow, etc. for fine new blends. .... \$6.00
- CONCERTO** (Tompkins 1943) (Sdlg x Depute Nomblot) Pansy purple. .... \$1.50
- COOL LEMONADE** (Muhlestein 1947) (Electra x Bonanza) Pale lemon-yellow self even to the beard. For the front of the border. .. \$10.00
- COPPER CASCADE** (Kleinsorge 1940) (Treasure Island x Far West) A lighter Tobacco Road. Nice but temperamental. .... \$1.00
- COPPER GLOW** (G. Douglas) (Gay Troubadour: Coronet x P. S.) x Sdlg: Red Bonnet x (Soldano x China Clipper) There's real copper here. H. M. 1945. .... \$12.50
- COPPER PINK** (Wm. Kellogg 1941) (Rosy Wings x Sdlg) Large pink blend. H. M. 1942. .... \$1.50
- COPPER RIVER** (DeForest 1945) (E. B. Williamson x Fortune) Glistening copper-tan. Wonderful parent. Sister to Fortune's Favor. .... \$10.00
- CORDOVAN** (Kleinsorge 1946) (314 x Bryce Canyon) Light golden copper. Scarce. H. M. 1947 ..... \$7.50
- CORITICA** (H. Sass 1942) (50-34 variegata x Tiffany) Yellow plicata with plenty of quality. I like it better than its sister Ruth Pollock. .... \$2.50
- CORONADO** (Tompkins 1945) (Flora Campbell x Golden Spike) Wide early yellow. Should be fine parent for reds. .... \$5.00
- CORTEZ** (Nesmith 1935) (Reverie x Sdlg: Sunlight x Coronation) Variegata parent of Extravaganza. .... \$1.00
- CO-STAR** (White 1947) (Probably Symbol x?) Early apricot blend with falls deeper sienna veined with mahogany. Striking. .... \$4.00
- COURS-LA-REINE** (Cayeux 1938) (Arlinde x Fakir) Nice pink blend with short branching. An unusually good parent. .... .50
- CREAM GOLD** (Muhlestein 1947) (Fort Knox x Dr. Loomis' Type Dore, a Sea Shell seedling) Standards yellow falls white edged yellow. Should breed shell pinks when used with them. .... \$2.50
- CREAMO** (Fitzpatrick 1945) (Sdlg x Golden Madonna) Huge cream self. A favorite of many. .... \$1.50
- DAMERINE** (Gage 1939) (Dauntless x Red Sdlg) Dark red self. H. M. 1941 ..... \$1.00
- DAMASCUS** (Tompkins 1945) (Sdlg: Spring Prom x E. B. W.) x Cedar Rose) Bi-orange yellow with falls brushed orange-brown. \$10.00
- DANUBE WAVE** (Schreiner 1947) (Anitra x Narain) Rich marine blue self. .... \$10.00
- DAWN OF GOLD** (Salbach 1940) (Sdlg: Bronze Beacon x San Francisco) x (Golden Majesty) Late tall yellow. Should breed good yellows, plicatas, reds and blends ..... \$2.00
- DAWN OVERLAY** (Muhlestein 1947) (Cameлина x City of Lincoln) Lighter Bertha Gersdorff. Plant with lemon yellows for real beauty. Falls horizontal. .... \$5.00
- DAYBREAK** (Kleinsorge 1941) (Far West x Sdlg: Jean Cayeux x Far West) Big pinkish-copper blend that does well in warm climates. Produces smooth finished seedlings. Is the parent of Merry Rose. A. M. 1943. .... \$3.00
- DAYDAWN** (Whiting 1940) (Sister to Cedar Rose) Pink-apricot and old gold ..... .75
- DEB'S DELIGHT** (D. Hall 1946) Large, tall flamingo pink self. Should be a good parent. Vigorous. .... \$5.00
- DEEP BUTTERCUP** (Muhlestein 1948) (Brown Betty x Golden Eagle) See 1948 Introductions. H. C. 1947 ..... \$15.00

- DEEP VELVET* (Salbach 1939) (Sdlg: San Diego x Sdlg) x (Modoc) Deep plum-purple with brown on falls. Lovely. A. M. 1942 \$1.50
- DERRILL HART* (Glutzbeck 1958) (Sdlg: Red Pattison Sdlg x Cameliard) x Sdlg: (Don Juan x Indian Chief) Big showy red. Should breed good reds. .... .50
- DESERT SONG* (O. Fay 1946) (Snow Flurry x Golden Eagle) A fine wide cream-yellow. Should be a wonderful parent for creams, yellows and true pinks. H. M. 1946 ..... \$15.00
- DISPLAY* (Grant 1942) (The Red Douglas x Christabel) Rich red-purple. H. M. 1942. .... \$5.00
- DISTANCE* (P. Cook 1946) (Sdlg: Castalia x Santa Barbara) x (Great Lakes) Fine light blue with a fascinating pedigree. H. M. 1946 ..... \$12.50
- DIXIE SUNSHINE* (Milliken 1944) (Yel 1856-2 x Sister to Fort Knox) Yellow with serrated petals. Nice. .... \$1.50
- DOMINION* (Bliss 1917) (Cordelia x Macrantha) Velvet on the falls--you can even feel it. May still be useful in breeding. .... .25
- DOMINION REX* (Kirkland 1936) (Morning Glory x Dominion) Bi-colored blue; almost a neglecta. .... .50
- DOROTHY DIETZ* (Williamson 1929) (Wyoming x Lent a Williamson) Parent to Wabash. May still lead to better amoenas. No pollen, ordinarily, but a good pod parent. .... .35
- DREAMCASTLE* (P. Cook 1943) (Involved) Wide orchid self. H. M. 1944 ..... \$10.00
- DREAM GIRL* (D. Hall 1944) (40-34 x 39-62) Beautiful small clear "flamingo pink." Scarce. .... \$7.50
- DREAMLAND* (Snyder 1945) (3p31: Trojana x Pioneer) x (3K31: Ricardi x Moa) Large hollyhock red. A different color. .... \$10.00
- DUE WEST* (White 1936) (Purissima x Susiana) Early tender white hybrid. .... .50
- EASTER BONNET* (Maxwell-Norton 1944) (Morocco Rose x Alastor) Rodenite pink edged gold. H. M. 1946. .... \$7.50
- EASTER CANDLE* ..(Essig 1946) (Mount Washington x Song of Gold) Large white with rich yellow in the throat. Tall. .... \$10.00
- EASTER GOLD* Essig 1946) (?) Medium-sized brilliant yellow as if carved of pure gold. H.M. 1946 ..... \$10.00
- EASTER MORN* (Essig 1931) (California Blue x sdlg: Argentina x Conquistador) Fine flaring white proving a marvelous parent. H. M. 1935 ..... .40
- EASTER SUNRISE* (C. Rees) (Snow Flurry x Happy Days) Creamy yellow. Should breed good whites, lavenders, pinks and plicatas. .... \$2.75
- EBONY QUEEN* (Sass Bros. 1947) (?) About the color of Sable. Said to do especially well in the Mid-West. .... \$10.00
- EDITH LOWRY* (Gage 1945) (Frank Adams x Ethelyn Kleitz: Chief Sidar x Red Bonnet) Standards golden orange and pink. Falls hydrangia red with border of brown. .... \$2.00
- EDITH RORKE* (K. Smith 1946) (Valentine x Florentine) Blue stitched plicata. .... \$7.50
- EDWARD LAPHAM* (Lapham 1942) (Sdlg: Omaha x Jerry) X Rubeo) One of the reddest iris. .... \$4.00
- ELAN* (White) (Sweet Alibi x Jocund :Oncocyclus x T. B.) 1/4 onco. A ruffled white. Tender. .... .50
- ELEGANS* (K. Smith 1943) (Easter Morn x Yellow Glory) Pale cream-yellow. Medium sized flowers. H. M. 1945 ..... \$4.00
- ELENA CHOOSING* (White 1944) (Answer: Fiesta x Chosen) x Jocund) Golden bronze. Should be an interesting parent because of its 1/4 oncocyclus blood. .... \$2.50
- ELIZABETH ANN* (Lapham 1940) (King Karl xSdlg: Midgard x Aphrodite) Tall, very late orchid-pink. 24 Chromosomes. .... .75
- ELLA CALLIS* (H. Sass 1942) (2-34 x 32-28: Midwest Gem x Prairie Sunset) Brilliant yellow S, falls flushed orange. Plant in partial shade for it sunburns. .... \$4.00
- ELMOHR* (Loomis 1942) ( Wm. Mohr x red Sdlg. H 22) Rich mulberry purple, winner of the 1945 Dykes Medal. Half sister to Morocco Rose. .... \$1.25 3 for \$3.00
- ELSA SASS* (H. Sass 1939) (Tiffany x Orloff) Lemon-yellow with white in falls. Elsa Sass x Cool Lemonade gave me wonderful lemon and lemon-white seedlings of fine proportions. A. M. 1941 ..... .60
- EPISODE* (White 1945) (Naranja x Fiesta) Fine yellow and orange bi-color. Should be a good parent. .... \$2.50
- ESQUIRE* (Lothrop 1945) (L8-40 x Brunhilde) Nicely formed medium purple with darker texture veining. H. M. 1947 ..... \$15.00



- EXTRAVAGANZA (G. Douglas 1944) (Adios x Cortez) New exciting "amoena." Cream standards red falls. A. M. 1947 ..... \$15.00
- FAIR ELAINE (Mitchell 1938) (Happy Days x California Gold) Dependable bi-colored yellow. A. M. 1940 ..... .75
- FAIR ENOUGH (White 1935) (Purissima x Susiana) Early blue. Interesting hybrid. Sets seed. .... .50
- FAIRY LIGHT (Thorup 1948) Spuria (Shellford Giant x yel.) See 1948 Introductions. .. \$10.00
- FALL DAYS (K. Smith 1947) (Matula x Orange Glow) Reddish copper bi-color. H. M. 1947 ..... \$20.00
- FARCROSS (White 1941) (?) Mulberry purple. 1/4 Oncocyclus, sets seed. .... \$1.00
- FAR WEST (Kleinsorge 1936) (145: Mme Cecile Bouscant x Dolly Madison) X (President Pilkington.) Plum and copper-tan blend. The remarkable break. H. M. 1937 ..... .50
- FAVORI (Cayeux 1934) Dark plum-purple. .55
- FIRECRACKER (D. Hall 1943) (Orloff x Elsa Sass) Brilliant yellow plicata marked and brushed red. H. M. 1943 ..... \$5.00
- FLAMELY (P. Cook 1943) (E. B. Williamson x sdlg. from: Morning Splendor, Seminol, Cinnabar) Silken red with orange undertone. H. M. 1944 ..... \$2.50
- FLORA CAMPBELL (Hill-son 1940) (From Sass and Hill-son sdlg. concentrating on King Tut and El Tovar lines) Excellent red. H. M. 1940 ..... .75
- FLORA ZENOR (J. Sass 1942) (Dore x ?) Tall growing, small shell pink that shows well in clumps or enmass. A. M. 1944 ..... \$1.00
- FLORENTINE (Cayeux 1937) (Chaldee x Sigurd) Overall patterned white plicata. Large. A. M. 1940 ..... \$1.00
- FLUTED ARROW (Mary Tharp 1946) (Sdlg: (Zasu x Susan Bliss) x Midwest) x Christine Gray) Fluted and ruffled blue and white pallida type plicata (24 Chromosomes.) ..... \$4.00
- FORT KNOX (Milliken 1941) (Sungold x Chosen) Nicely formed (waved) yellow. A. M. 1944 ..... \$1.00
- FORTUNE (Kleinsorge 1941) (Old Parchment x Sdlg: (Tuscany Gold x?) x Rameses) Coppery golden yellow. A superb parent for blends ..... \$1.00
- FORTUNE'S FAVOR (DeForest 1944) (E. B. W. x Fortune) Huge golden-tan. An unusual parent-giving new breaks. .... \$6.00
- FRANCELIA (McKee 1945) (Golden Majesty x Sdlg: Helios x Janet Butler) New popular yellow, not unlike Spun Gold in coloring. H. M. 1944 ..... \$8.00
- FRANCONIA (Graves 1942) (Alba Monte: Purissima x Gudrun) x Snowking) Large, tall white. H. M. 1942 ..... \$7.50
- FRANK ADAMS (Lapham 1937) (Rameses x Jerry) Showy variegata blend everyone wants in his collection. It has given shell pinks when bred to them. A. M. 1940 ..... .50
- FRANKLIN B. MEAD (Mead-Reidle 1936) (Los Angeles x True Charm) Los Angeles-type plicata. Fertile pollen on Wm. Mohr. .... .50
- FROSTIA (D. Hall 1947) (?) Large Frosty white ..... \$4.00
- FROSTY BLUE (Whiting 1941) (Shining Waters x Gloriole) Good blue that should prove a fine parent for blues and whites. .... \$2.00
- FROSTY MOON (Maxwell 1944) (Ming Yellow x Prairie Sunset) White tinted lavender. Will be a fine parent for yellows and blends. .... \$4.00
- GALLANT LEADER (Wiesner 1939) (Sdlg: Morning Splendor x Germaine Perthuis) x (Depute Nomblot) Big flower in the form of Depute N. but much more red. H. M. 1939 \$1.00
- GALLANTRY (Whiting 1945) (Winnesheik x Mata Hari) Large dark ruffled blue; not unlike Chivalry in many respects. .... \$7.50
- GARDEN FLAME (H. Sass 1941) (83134: Sdlg. from King Tut x 42-35: Miss Aravilla x 35-29: King Tut x Cardinal) Superb garnet red. A. M. 1943 ..... \$3.00
- GARDEN GLORY (Whiting 1943) (The Red Douglas x Garden Magic) Absolutely stunning is this smoothly finished red-purple. A little difficult to set seed but pollen is most fertile. A. M. 1947 ..... \$7.50
- GARDEN MAGIC (Grinter 1936) (Wotan x Ella Winchester) The best inexpensive red we know and the parent to many of the best. H. M. 1937 ..... \$1.00
- GAY SENORITA (Salbach 1944) (Sdlg. from Alta California, Miss Calif., etc. x Sdlg: Happy Gift x Sdlg.) Huge veined varietata. Unusual. H. M. 1945 ..... \$3.00
- GENERAL MacARTHUR (National 1943) (?) Huge cream brushed yellow. .... \$2.00
- GENTLE FLORENCE (C. C. Taylor 1947) (Snow Flurry x Violet Symphony) Similar in color and shape to Snow Flurry; better branching. H. M. 1947 ..... \$10.00

- GILT EDGE** (Whiting 1941) (Happy Days x Matula) Huge flower in the colors reminiscent of Golden Fleece. A fine parent. .... \$1.00
- GLORIOLE** (Gage 1933) (Souv. de L. Michaud x Queen Caterina) Frosty light blue. A remarkable parent for blues and whites. A. M. 1935 ..... .50
- GLORY** (D. Kinish 1947) (Shining Waters x Gudrun) Bright light yellow. .... \$10.00
- GOLDBEATER** (Kleinsorge 1944) (245: Rebellion x Naranja) x Far West) Brightly colored deep yellow. A wonderful parent. H. M. 1945 ..... \$4.00
- GOLDEN EAGLE** (D. Hall 1942) (38-26: 56-11: W. R. Dykes x Dolly Madison) x Morocco Rose) x (Prarie Sunset) The finest parent we know. Produces wonderful seedlings in pinks and orchids with tangerine and red beards as well as fine blends and yellows. It is the parent of three of my 1948 introductions so you know what I think of it. Cleans up muddy colors, and although it hasn't great substance itself produces it, as well as vigor, in its seedlings. H. M. 1942 ..... \$1.50
- GOLDEN EPAULETS** (Grant 1946) (Sunday Best x Chosen) Large smoothly finished white with golden epaulets on hafts. .... \$8.00
- GOLDEN FLEECE** (J. Sass 1940) (Siegfried x Dore) Refined light yellow with white in center of falls. Should breed pinks, lemons, yellows and plicatas. A. M. 1942 ..... \$2.00
- GOLDEN HIND** (Chadburn 1934) Gold Imperial x W. R. Dykes) Bright buttercup yellow. A good parent for yellows. Eng. Dykes Medal 1934. .... .40
- GOLDEN MADONNA** (Essig 1936) (Yel. 966 A x W. R. Dykes) Something on the order of Golden Fleece but wider of parts. .... \$1.00
- GOLDEN MORN** (Essig 1946) (Happy Days x Sdlg.) Warm bright yellow with the form of Easter Morn (one of its progenitors.) .... \$8.50
- GOLDEN RUFFLES** (C.C. Taylor 1946) (Margaret Bond x Vivacious) Huge smoothly finished yellow that catches the eye immediately. Not as ruffled as the name implies, but plenty nice. H. M. 1946 ..... \$10.00
- GOLDEN RUSSET** (D. Hall 1946) (Yel Sdlg x Golden Eagle) What did I tell you? Golden Eagle its parent! Huge Golden Russet self. A clump will astound you. H. M. 1947 \$8.00
- GOLDEN SPANGLE** (Cassebeer 1944) (Evolution x Happy Days) More brilliant Golden Fleece type. Showy in the garden. H. M. 1944 ..... \$3.50
- GOLDEN SYMPHONY** (Horton 1944) (Plurabelle x Rameses) Standards brilliant yellow, falls lavender-blue edged yellow. A bright show in the late season. This will become very popular when better known. .... \$10.00
- GOLDEN TREASURE** (Schreiner 1936) (Pluie D'Or x W. R. Dykes) Light yellow still very much in demand. A. M. 1938 ..... .50
- GOLD RUFFLES** (Muhlestein 1947) (Mary Rich Lyon x Midwest Gem) The most heavily ruffled yellow iris we have grown or seen. Produced the best pink I had last year, but unfortunately the seedling was a "lost chord" for it bloomed without increase. I think Gold Ruffles will catch your heart-strings. .... \$12.50
- GOLD RUSH** (Essig 1946) (Golden Hind x Sdlg 1516 A) Said to be one of the brightest yellows in the garden. .... \$7.50
- GOOD FORTUNE** (Mitchell 1945) (Advance Guard x 5-3 involving mostly plicatas) Pale, small pink-marked plicata. .... \$5.00
- GOOD NEWS** (Kleinsorge 1946) (Mexico x Tobacco Road) Sister to Bryce Canyon but much lighter and more the form of Tobacco Road. H. M. 1947 ..... \$7.50
- GRACE MOHR** (Jory 1935) (Wm. Mohr x Yel Mitchell Sdlg) Large flaring lavender with the "Mohr" veining. Sets seed, but for me Grace's children have been unhappily poor. A. M. 1939 ..... \$1.00
- GRAND CANYON** (Kleinsorge 1941) (Treasure Island x Far West) A stunning blend of plum, copper and blue. A. M. 1944 .... \$1.00
- GREAT LAKES** (Cousins 1938) ((Dominion x) x (Conquistador x)) It is difficult to replace this reliable 1942 Dykes Medal winner. .. \$1.00
- GULF STREAM** (O. Fay 1946) (Dymia x Naraïn) It must be an improved Dymia. A dark purple-blue. H. M. 1946 ..... \$12.50
- GYPSY** (Kleinsorge 1945) (245 : Rebellion x Naranja) x E. B. Williamson) What a variegata! Coppery Gold standards with chestnut falls. Should breed excellent chestnut and orange seedlings. Would suggest Bryce Canyon, Arab Chief, Ella Callis, Coloratura and Fortune's Favor as some of its mates. H. M. 1945. .... \$5.00
- GYPSY BARON** (Schreiner 1942) (Claribel x Madam L. Aureau) Almost purple, this very heavily marked plicata. Fertile on Wm. Mohr. .... \$2.00
- GYPSY KING** (Lothrop 1944) (Sdlg x Far Cross) Rich mulberry purple not unlike Sheriffa, only falls are wider. 1/8th Oncocyclus. .... \$2.00

- GYPSY MAID** (Gage 1945) (Arethusa x Red Bonnet) Similar to Lancaster only larger and taller. Quite nice. .... \$2.00
- GYPSY ROSE** (Whiting 1946) (Amaranth x Three Oaks) Large blend of red, copper and blue. Wide full flowers. Sister to Campfire Glow. .... \$15.00
- HALLELUIAH** (Welch 1946) (Gudrun x Easter Morn) Pure white of fine shape .... \$10.00
- HARRIET THOREAU** (P. Cook 1944) (Sister to Dreamcastle) Light Orchid-pink. H. M. 1945 ..... \$5.00
- HARMONETTA** (White 1945) (Lost) Not yet well known, but as blue as any of the introductions. Smooth clean self. .... \$10.00
- HAUGHTY** (Welch 1946) (California Gold x Easter Morn) Good cream of heavy substance. .... \$7.50
- HELEN FITZGERALD** (Thorup 1948) (White Sdlg: Purissima x Wasatch) x ((Sdlg: Dolly Madison x W. R. Dykes) x (Sdlg: Souv. de Mme Gaudichau x Ricardi)) Lobelia Violet self. See 1948 introductions. .... \$25.00 Net
- HELEN MCGREGOR** (Graves 1946) (Purissima x Cloud Castle) The light blue everyone will eventually want to own. H. M. 1946. .... \$18.00
- HER GRACE** (DeForest 1945) (Purissima x Sdlg: Alta California x King Midas) Hortense violet. A good parent for many colors. .. \$1.00
- HIGH SPIRITS** (Horton 1945) (Aztec Glory x Riding High) Strawberries and cream \$10.00
- HIWASSEE** (Becherer 1946) (Frieda Mohr x Sdlg from Dauntless, Rameses, Julia Marlow and Morning Splendor) Larger better formed Frieda Mohr. .... \$6.00
- HONEYFLOW** (Tompkins 1944) (Aztec Copper x Veishea) Smooth blend of Meadow-sweet-rose brushed copper. H. M. 1946 \$15.00
- HOOGSAN** (A. Samuelson 1947) (Hoogiana x San Francisco) Violet blue of most fascinating blood-being a true hybrid of species Hoogiana. It has fertile pollen and sets seed. .... \$7.50
- HOWDY** (Clevenger 1946) (Gudrun x Buechley Giant) Large icy white. .... \$2.00
- ICY BLUE** (Weed 1940) (?) Tall light blue. Popular. .... .75
- ILLINOIS SUNSHINE** (Faught 1946) (Happy Days x Jean Caycux) Most brilliant, very large early yellow. .... \$10.00
- ILLUSION** (Kleinsorge 1943) (Ormohr x Red Cross) Light true Orchid self. A beautiful iris, and a grandchild of Wm. Mohr. H. M. 1947 ..... \$5.00
- INDIANA NIGHT** (P. Cook 1942) (Valor x Sable) A good blue-black seedling of Sable. A. M. 1944. .... \$6.00
- INDIAN HILLS** (Grant 1935) (Pioneer x Cardinal) Fine purple. .... .40
- INNOVATION** (D. Hall 1945) (Sdlg: Claribel x Sachem) X Orloff) Nice rose trimmed plicata. H. M. 1947 ..... \$5.00
- INSPIRATION** (Stevens 1937) (Pioneer x Magnifica) Huge mulberry-pink. Most fertile pollen on Wm. Mohr. Stock scarce for the demand is heavy. .... \$2.00
- INTERMEZZO** (Tompkins 1944) (See Capistrano) Grandchild of Wm. Mohr. Plain petunia violet and russet-brown. Produces unusual seedlings. .... \$3.50
- ISABELLINA** (Mitchell) (Sister to Happy Days) Not for sale
- IVORY CHARM** (Whiting 1947) (Priscilla x Baghdad) Broader Golden Treasure type. Should breed fine creams, whites and even reds. .... \$3.00
- JAKE** (J. Sass 1945) (Tiffany x Maid of Astolat) Excellent inexpensive white with lemon glow. A parent for lemons, whites and plicatas. .. .75
- JASPER AGATE** (Mrs. T. Williams 1943) (Sdlg: Junaluska x Consort) x Cheerio) Small low-growing red-copper. Brilliant. H. M. 1944 ..... \$6.00
- JOAN LAY** (Chadburn 1939) (Sdlg: Purissima x Gold Imperial) x Golden Hind) Brilliant yellow. .... \$2.00
- JOCUND** (White) (Oncocyclus x bearded) White with gold reticulations. Fertile pollen. .... .50
- JULIET** (Kleinsorge 1946) (269 x Prairie Sunset) Flame-copper with salmon shadings. H. M. 1947 ..... \$7.50
- KANSAS INGLESIDE** (Hill-son 1939) (From Sdlgs from King Tut x El Tovar) Nice red which sometimes re-blooms. H. M. 1947 \$1.00
- KATHERINE FAY** (O. Fay 1945) (Gloriole x Sdlg 39-3) Large warm white. A good parent. A. M. 1947 ..... \$7.50
- KEARSARGE** (Graves 1946) (?) Lavender-blue. Standards and falls have an edging of silver. .... \$12.50

- KEEP 'em FLYING** (Lyell 1942) (Evolution x Waconda) (Color of a Bronzy-red pigeon's breast. It gets prettier as it ages. 36 inches. .... \$3.00
- KLONDYKE GOLD** (Kirkland-Williams 1941) (Marvelous x?) A huge yellow that gets a lot of attention. .... \$1.50
- LADY BOSCAWEN** (Graves 1946) (Purissima x Cloud Castle) Huge white sister to Helen McGregor that is highly praised. H. M. 1946 ..... \$12.50
- LADY LILFORD** (Foster 1916) (paradoxa x pallida) Dark blackish-purple hybrid that rarely sets seed. .... .50
- LADY MOHR** (Salbach 1944) (Sdlg: King Midas x Alta California) x Capitola) Oyster-white standards. Falls pale chartreuse with prominent dark patch surrounding the beard from which some veins emanate. Nothing takes the weather better. Plant near lemon yellows to bring out her beauty. A. M. 1946 .. \$10.00
- LADY NAOMI** (O. Fay 1941) (Violet Crown x Shining Waters) Large over-all speckled plicata. H. M. 1942 ..... \$1.00
- LADY OF SHALOTT** (Schreiner 1942) (Rosy Asia x Madam L. Aureau) Delicately marked pink plicata. .... \$2.50
- LA GOLONDRINA** (Tompkins 1946) (Brunhilde x Lilimani) Large royal purple. Somewhat similar to Gulf Stream. .... \$12.00
- LAKE BREEZE** (O. Fay 1945) (Gloriole x Ballet Girl) Large ruffled blue with a suggestion of pink. Delightful. H. M. 1945 ..... \$8.00
- LAKE GEORGE** (K. Smith 1945) (Probably from Madam Ulmann) Quite blue--the parent to Blue Valley. H. M. 1945 ..... \$7.50
- LAKE SHANNON** (DeForest 1945) (Sdlg: Souv de Loetitia Mischaud x Jean Cayeux) x (Great Lakes) Medium dark blue with darker texture veining. H. M. 1946 ..... \$10.00
- LAMPLIGHT** (Schreiner 1944) (Amitola x Angelus) Beautiful smooth buff blend. Will be liked when better known. .... \$5.00
- LAMPLIT HOUR** (Tompkins 1947) (Lancaster x Honeyflow) White standards, and falls of velvety yellow the color of Spun Gold. .. \$10.00
- LANCASTER** (P. Cook 1940) (Sdlg x E. B. Williamson) Broad, ruffled rose-pink with yellow undertone. A fine parent. H. M. 1951 ..... \$1.00
- LATE GUEST** (Muhlestein 1946) (City of Lincoln x Royal Command) Flaring rich brown variegata. Late. It likes hot weather. .... \$5.00
- LAVENDER AND GOLD LACE** (Whiting 1946) (Moon glow x Matula) Standards yellow; Falls lavender edged with a crimped finish and gold trim. .... \$2.50
- LEILANI** (Washington 1943) (Copper Crystal x Melitza) Orange-pink. A step forward in deepening the orange and pink color perhaps. Scarce. H. M. 1945 ..... \$20.00
- LIDICE** (Tompkins 1945) (The Red Douglas x Winneshick) "The Black Dahlia" with falls edged heather. .... \$10.00
- LIGHTHOUSE** (Salbach 1936) (Helios x Ramesses) Showy coppery-red, a golden light within. A. M. 1940 ..... .75
- LIGHTS ON** (Lapham 1946) (Sdlg: Christabel x Red Gleam) x Sdlg : ((Red Sails x Jerry) x (Red Gleam.) A step toward that real red. H. M. 1946 ..... \$10.00
- LITTLE ELSA** (Muhlestein 1948) (Brautjungfer: "Bridesmaid" x Bride) A lemon-yellow dwarf with semi-flaring falls. See 1948 introductions. .... \$2.00
- LORD DONGAN** (K. Smith 1940) (Sdlg: Andante x Dauntless) x Nene) Chinese Violet standards, falls broad pansy violet. Rich gem. .... \$3.00
- LOS ANGELES** (Mohr-Mitchell 1927) (Sdlg: Conquistador x Parisiana) x Esplendido) Delicately marked white plicata. A. M. 1944 .. .40
- LOTHARIO** (Schreiner 1942) (Madam M. Lassailly x Winneshick) Rich Neglecta now coming into its own. H. M. 1945 ..... \$5.00
- LOUISE BLAKE** (K. Smith 1943) (Madam M. Lassailly x Wabash) Most striking neglecta. Falls nicely bordered color of standards. A. M. 1947 ..... \$7.50
- LOVE AFFAIR** (Mitchell 1946) (from two complicated plicata lines) Described by one visitor as: "Madam Louis Aureau in pinker and longer skirts." Must have that "new look." Looks best when established. .... \$10.00
- LOUVOIS** (Cayeux 1936) (Sdlg: Fetiche x Roi Soleil x Sdlg: Iceberg x Evolution) Maroon-brown. Falls have a lighter edge. .... .75
- LUCERNE** (Salbach 1940) (Shining Waters x Brunhilde) Good blue in heavy demand. Lovely fragrance. .... .75
- LYNN LANGFORD** (D. H. 1946) (Two pink blend sdlgs) Orchid-pink with golden yellow center and smooth gold on hafts. Lovely. H. M. 1946 ..... \$12.00

- MADAM MAURICE LASSAILLY (Cayeux 1935) (Armour x Carillon) Large neglecta. Dykes Medal France 1935 ..... \$1.00
- MAGIC WAND (Kleinsorge 1946) (Tobacco Road x Daybreak) Deep golden-tan Self. .... \$6.00
- MAIDEN BLUSH (D. Hall 1943) (Pink blend Sdlg x May Day) Apricot blend. A good parent. .... \$2.00
- MANDALAY (D. Hall 1943) (35-40: Dauntless x Rameses) x May Day) Delightful reddish copper-rose. Flaring. A wonderful parent. Produces fine blends, coppers and new colored reds. H. M. 1943 ..... \$2.00
- MARIMBA (DeForest 1944) (Salar x Far West) Large bright cinnamon blend. Fine parent for oranges, blends and plicatas. .... \$2.00
- MARION VAUGHN (K. Smith 1947) Elsa Sass x Wood Thrush: Siegfried x Madam L. Aureau) Frosted lemon ice. .... \$20.00
- MAROON DAMASK (Kleinsorge 1946) (Mexico x red sdlg.) Late maroon self. .... \$5.00
- MARQUITA (Cayeux 1931) (Symphonie x Helios) Ivory yellow with falls veined watermelon. Striking. .... .40
- MARTIE EVEREST (Kirk-McDade 1955) (?) Reliable fall bloomer in a blue bi-color. .... .50
- MARY CLOTILDE (D. Kinish 1944) (Blue Triumph x Shining Waters) Some good reports on this blue iris. Fragrant, too. .... \$2.50
- MARY E. NICHOLLS (Nicholls 1939) (Valor x Lucero) Cream-white with gold overlay on hafts. Finished flower. A. M. 1943 ..... .75
- MARY RICH LYON (Callis 1937) (Purissima x Pluie D'Or) Rather ugly ruffled chartreuse cream-white. Pod parent of my Gold Ruffles and 44-67 my shell pink break that is now giving me fine pink seedlings, but the other parent was Midwest Gem---it helped too .... .50
- MARY VERNON (McKee 1942) (Sdlg: 3814 x Janet Butler) x Chosen) A bright red-brown variegata. A. M. 1945 ..... \$4.00
- MASTER CHARLES (M. Williamson 1944) (?) Bright glowing mulberry. A. M. 1946 ..... \$5.00
- MATTERHORN (J. Sass 1938) (San Francisco x 2730 Hans Sass plicata, sister seedling to Baldwin) Fine clear white. A. M. 1940. \$1.00
- MATTIE GATES (Sass Bros. 1946) (Golden Fleece x 40-371: two yellow plicata sdlgs) Done in the manner of Golden Fleece, but more brilliantly contrasted in lemon yellow-gold and pure white. H. M. 1946. .... \$25.00
- MATULA (H. Sass 1939) (Sister to Midwest Gem) Ruffled rich blend that is a marvelous parent. H. M. 1939 ..... .50
- MAY APPLE (Callis 1946) (Mary Rich Lyon x Matterhorn) New white still under trial. Perfume of apple blossom. .... \$10.00
- MELANIE (Hill-son 1941) (?) Tall lavender-pink. A good performer. H. M. 1941. .. \$1.25
- MELITZA (Nesmith 1940) (?) Light ivory with pink cast throughout and a "tangerine" beard. Plant this with Sable. A. M. 1942 ..... \$1.00
- MELLOWGLOW (Whiting 1942) (Midwest Gem x Fiesta) Luscious blend of apricot, peach and amber yellow. Has produced some Shell pinks for me when bred with them. Produces ruffling in its seedlings very often. H. M. 1942. .... \$10.00
- MELODIST (DeForest 1946) (Salar x Tobacco Road) A huge flaring henna blend on gold ground. Stunning. H. M. 1947 ..... \$10.00
- MELODY LACE (Muhlestein 1946) (Madam Louis Aureau x Tiffany) Cream ground plicata edged lavender-pink. Slightly ruffled. Fast grower. .... \$5.00
- MERRY ROSE (Muhlestein 1948) (Lancaster x Daybreak) Rose self. See 1948 introductions. .... \$5.00
- MEXIA (Whiting 1947) (Matula x CHINA Maid) Lovely light pink blend, sister to Three Oaks and Tea Rose. A fine parent. # 42-6 ..... \$1.00
- MEXICAN MAGIC (Whiting 1947) (Sdlg: Crimson Tide x E. B. W.) x Veishea) Spanish red, brilliant blue and molten copper. \$5.00
- MEXICO (Kleinsorge 1943) (Sdlg: 245: Rebel x Naranja x Sdlg 255: Treasure Island x Apricot) A really fine and different Variegata, and a most remarkable parent. H. M. 1944 .. \$3.00
- MICHAEL (Norton 1946) (Matula x Remembrance) Bridal-Rose pink with gold reticulations and canary yellow beard. .... \$6.00
- MICHAEL BARTON (Tompkins 1947) (E. B. Williamson x Bright Melody) Carmine, Magenta and deep Hollyhock red. H. C. 1945 under # 45-10. Scarce. .... \$20.00

- MIDWEST GEM** (H. Sass 1937) (22-31: Rameses x 32-28: King Tut x Cardinal) x Amittola) Pale ruffled pink-buff blend. It produces wonderful seedlings in many colors including shell pinks when used with them. H. M. 1957 ..... .50
- MING YELLOW** (Glutzbeck 1937) (Yel 3 : Green Yel sdlg x W. R. Dykes) x Depute Nomblot) A big yellow and a fine performer. A. M. 1941 ..... .75
- MINNIE COLQUITT** (H. Sass 1942) (?) White plicata Strikingly bordered deep purple. A. M. 1945 ..... \$5.00
- MIOBELLE** (McKee 1945) (Sdlg: Naranja x Janet Butler) x Aubanel) Broad Rose blend. Not too showy but a remarkable parent. H. M. 1945 ..... \$6.50
- MIRABELLE** (Whiting 1941) (Matula x Happy Days) Apricot blend flushed pink. Unusually weak stems, but worth staking. Difficult to set seed but a worthy parent when it will. H. M. 1941 ..... \$5.00
- MIRIAM COREY** (Gage 1946) (Anna Gage: W. R. Dykes x Tarasca x ?) Mathew's purple flushed with soft violet and brown epaulets on the hafts. .... \$3.00
- MIRROR LAKE** (Muhlestein 1947) (Blue Spire x Great Lakes) Flaring and waved blue of delightful form. .... \$7.50
- MISS BISHOP** (J. Sass 1942) (Tiffany x Maid of Astolat) White from plicata parents. Most beautiful buds. .... \$1.00
- MISSION MADONNA** (Essig 1946) (Sdlg: Purissima x New Albion) x Sdlg: (Miss Wil-mott x Sherbert) x W. R. Dykes) Lighter than Golden Madonna--a soft creamy-white with picoteed edges. H. C. 1945. .... \$10.00
- MISS MUFFET** (Sallbach 1940) (Yel Sdlg: Dauntless x W. R. Dykes) x Capitola) More green and yellow Lady Mohr type. Quite ugly! ..... \$1.00
- MISSOURI** (Grinter 1933) (Sensation x Blue Ribbon) Deep blue with brown on haft. Good blue; parent of Chivalry. 1937 Dykes Medal. .... .50
- MISSOURI NIGHT** (Callis 1938) (Baldwin x Blue Velvet) Indigo blue with brown on haft. .... \$1.00
- MIST GLOW** (Muhlestein 1948) (Sundust x Radiant) New Amoena. White standards, pale lavender falls. See intructions .. \$10.00
- MISTY GOLD** (Schreiner 1943) (Tiffany x Siegfried) Light lemon-gold spangled beauty. Some ruffling. Stalks sometimes require staking but it is well worth the trouble. H. M. 1945 ..... \$3.00
- MOHRSON** (White 1935) (Wm. Mohr x ?) Deep violet Wm. Mohr seedling. Pollen somewhat fertile. Parent of Anita Catherine (See 1948 introductions.) ..... .50
- MONADNOCK** (Sallbach 1937) (Marquita x Dark Knight) Very showy lavender-rose. A great favorite of garden visitors. .... \$1.00
- MOON BLOSSOM** (Tompkins 1946) (4 E 38 : Wm. Mohr x Mussolini) x Veishea) Deep camellia pink and twilight blue with creamy undertone. .... \$7.50
- MOONLIGHT MADONNA** (J. Sass 1943) (Yel sdlg. x Elsa Sass) Larger finer branched and better formed Elsa Sass color. Plant near Moonlit Sea or Lady Mohr. A. M. 1945 \$3.00
- MOONLIT SEA** (J. Sass 1943) (from sdlgs:) Odd blue with yellow ground. Plant with lemon-yellows, Bertha Gersdorff or Dawn Overlay. .... \$1.00
- MOONTIDE** (McKee 1946) (Red Gleam x Mary Vernon) Rich cadmium velvety yellow. Scarce. H. M. 1946. .... \$10.00
- MOON RAY** (H. Sass) (?) Formerly named Moonbeam. Wide lemon-cream. Undoubtedly descended from Rameses. Should be valuable for creams, lemons and pinks. .... \$2.50
- MORNINGSIDE CREAM** (Ramsey) (Purissima x Gudrun) Guest.
- MOROCCO ROSE** (Loomis 1937) (H. 22 x F 70: W. J. Fryer x Ricardi) Large popular pink blend. Valuable for pink breeding. It will produce shell pinks when bred with them. Half sister to Elmohr, and might be valuable to cross back to Elmohr. H. M. 1937 ..... .75
- MOTHER LODGE** (Essig 1946) (Sdlg: China Lantern x W. R. Dykes) x Blue and Gold) Clear creamy yellow. Hafts brushed deep yellow. Fragrant. .... \$10.00
- MOTHER'S DAY** (Milliken 1945) (Lavender Sdlg x Top Hilly) Metallic lavender blend with some onco blood. Sets seed readily. Large and tall ..... \$1.50
- MOUNTAIN SKY** (Milliken 1941) (1594 x 14 85) Good tall blue. A splendid parent for blues and whites. .... \$1.00
- MOUNT BLANC** (Grant 1946) (Sunday Best x white Sdlg.) Large white with magnolia-like substance. .... \$12.50

- MOUNT CLOUD** (Milliken 1936) Rajput x Easter Morn) Good dependable white, and a fine parent. The grandparent of my new white and greenish-chartreuse seedlings: Glistenglow and Greenglow. .... \$5
- MOUNT HERMON** (Lowry 1945) (Buechley x Phebus) White highly praised in the East and a sister to Syringa. H. M. 1945 ..... \$9.00
- MOUNT TIMP** (Muhlestein 1945) (October Opera x Tiffany) Surprisingly large and heavy substantiated for having come from October Opera. Bred for fall bloom. Some reports have reached us that it does re-bloom in the fall. Mount Timp gives quite a pink garden effect from a distance. Larger than Tiffany, early and long blooming. Creamy-white ground with rosy-red markings. Not tall--for the front of the border--about 32 inches. .... \$2.50
- MOZO** (White 1938) (Oncocyclus seedling x T. B. Mitchell Sdlg) Creamy yellow ground veined all over bronze-red. .... .75
- MRS. J. L. GIBSON** (Gibson 1930) (Dominion x Souv. de Mme. Gaudichau) An inky-blue-purple self. .... .50
- MT. McKINLEY** (Schreiner 1947) (Amigo x Wabash) A splendid new' addition to the amoena class, but the falls are not margined as in Wabash. Fertile pollen and sets seed. .... \$5.00
- MULBERRY ROSE** (Schreiner 1941) (Frieda Mohr x ? Violet Crown or Ozone) Showy mulberry with brown on haft. A. M. 1944 ..... \$2.50
- MUSTAPHA** (White 1944) (Oncobred) Yellow ground falls heavily veined red. Flaring--unusual for an Onco-bred. .... .75
- MY CHOICE** (Tharp) (Gertrude Fields x Quiv-  
era) I've grown this delicate orchid-pink pallida (24 chromosomes) for several years, and it is one of my favorites among the pallida-type pinks. My Choice has bright orange-tangerine beard to set it off. .... \$2.00
- MY DAY** (Tharp 1944) (Wm. Mohr x Los Angeles) Very large full flowers somewhat on the coloring of Grace Mohr and Ormohr with more white showing through. Sets seed with some difficulty. .... \$3.00
- NANKEEN** (Whiting 1947) (Sdlg: Mirabelle x Sass 40-07: Yel Sdlg x Rameses) x Elsa Sass) Chinese yellow enlivened by deeper yellow throughout. Should breed fine pinks, yellows and lemon yellows. .... \$10.00
- NANCY HARDISON** (G. Douglas 1944) (Sdlg: Sdlg: Francesca x Yel Sdlg.) X Radiant)) x Gay Troubadour: Coronet x Prarie Sunset) Peach-pink and yellow blend. Delightful form. H. C. 1943. .... \$10.00
- NATALIE** (E. Callis 1946) (Saint Joseph x Clinton Sylvester) This looks like a Pallida. Reminiscent of Ballet Girl. The Style-arms are deep orchid while the flower itself is very pale orchid-white. A most charming personality. Scarce. .... \$10.00
- NATIONAL WHITE** (Weed 1944) (? Gudrun x Buechley Giant ?) Huge white parent of Carlsbad Caverns. .... \$2.00
- NEAR EAST** (White 1938) (Oncobred) Creamy yellow ground with maroon-purple dots and veins. .... \$1.50
- NEW HORIZON** (O. Fay 1946) (Sdlg: Morocco Rose x Hall's 40-24) x Overture) Peach with tangerine beard. H. M. 1947 ..... \$15.00
- NEW SNOW** (O. Fay 1946) (Snow Flurry x Katherine Fay) Large, wide clean white. H. M. 1946 ..... \$17.50
- NICOLE LASSAILLY** (Cayeux 1938) (Policinelle x Don Juan) Blue bi-color. Dykes medal France 1937. .... \$4.00
- NIGHTFALL** (D. Hall 1942) (Indian Chief x very dark Sdlg.) Splendid rich early bi-purple. A. M. 1945. .... \$1.50
- NIGHT LIFE** (Muhlestein 1948) (Storm King x Sable) Black-purple with rich mulberry-red undertone. See 1948 Introductions. .... \$20.00
- N. J. THOMAS** (Thomas-Thorup 1944) (Wm. Mohr x ? Cardinal or El Capitan) Somewhat velvety bi-purple of nice proportions, although it has little garden appeal. Will set seed, but difficult for me. .... \$1.50
- NOONDAY SKY** (Weed 1940) (?) Really one of the most showy garden blues. .... .75
- NO-WE-TA** (H. Sass 1932) (Midgard x King Karl) Low-growing ruffled, pallida, pink blend. Sister to Clara Noyes. .... .25
- NYLON** (Whiting 1940) (Amitola x Sandlewood) Huge nylon-tan self. A remarkably fine parent. Crossed with Golden Eagle pollen gave me Gay Orchid--an orchid self with tangerine beard which I hope to introduce next year. .75
- OAHU** (Fitzpatrick 1946) (Sdlg: Coronado x Sdlg) x Sdlg) Buckthorn brown self lightly flushed with violet and sprinkled with gold dust. .... \$1.50
- OCCIDENTAL** (Mitchell 1945) (from two Plic. sdlgs.) Cream plicata with red on base of falls. Small. .... \$5.00
- OKLAHOMA** (Mitchell 1945) (two plicata sdlgs) Olive yellow with blue in falls. .... \$4.00

- OLA KALA** (J. Sass 1943 ( Sdlg: Sdlg : Amitola x?) x Prarie Sunset) x (Sdlg: Golden Age x ?) Simply stunning orange-yellow. Runner up for Dykes Medal 1947, tied with Daybreak 1946 and well deserving of highest praise. A. M. 1947. .... \$4.00
- OLD LACE** (Mitchell 1945) (Sdlgs from: Orloff, Seduction, Comstock, Alta California) A bi-colored "fancy." Small. .... \$4.00
- OLD PARCHMENT** (Kleinsorge 1939) Treasure Island x Far West) Creamy-pink old parchment color. Crossed with Mellowglow gave me some wonderful blends. A. M. 1941. \$1.00
- OLD ROSE** (Salbach 1940) (Sdlg: Marquita x Monadnock) x Dark Knight) Very large, tall old-rose. Always a sell-out. .... \$2.00
- ORANGE GLOW** (Cassebeer 1942) (Junaluska x Radiant) Better formed Radiant-type. Matula x Orange Glow has produced fine things for Kenneth Smith as mentioned by Mr. Randall in Bulletin 103. .... \$2.50
- ORANGEMAN** (Waters 1946) (Naranja x Golden Majesty) Fine new orange yellow. H. M. 1947. .... \$7.50
- ORCHID LADY** (Salbach 1943) (Sdlg: Anne-Marie Cayeux x Alta Calif.) x Miss Calif.) Wide orchid. A showy clump. .... \$2.00
- OREGON SUNSHINE** (Weed 1939) (?) Wide light yellow. Parent of the so-called green "Green Pastures." .... .75
- OREGON TRAIL** (Kleinsorge 1943) (Sdlg 245: Rebellion x Naranja) x Aztec Copper.) Tawny salmon with brown on haft. .... \$2.50
- ORLOFF** (H. Sass 1937) (El Tovar x Amenti) A brushed yellow plicata. Pollen is very fertile on Wm. Mohr. H. M. 1937 ..... .50
- ORMACO** (Kleinsorge 1942) Ormohr x Aztec Copper) Violet and bronze blend. Heavy substance. A good parent. H. M. 1947 ..... \$2.00
- ORMOHR** (Kleinsorge 1937) (Wm. Mohr x Anakim) Silvery lilac-lavender. Produces seed and seedlings rather easily. A. M. 1940 .... .50
- OURAY** (Thomas 1937) (Dauntless x Sdlg: Grace Sturtevant x Cameliard) Very short border iris about as red as any of them. .... .50
- OVERTURE** (D. Hall 1944) (4034 x 39-62) Small "flamingo pink." The parent to other newer pinks. H. M. 1944. .... \$8.00
- OZONE** (J. Sass 1935) (Sdlg: Baldwin x King Tut) x Douglas) Rosy lavender with copper in falls. Unusual. A. M. 1938 ..... .50
- PAILLASSE** (Cayeux 1936) (Marquita x Redalga) More smoky Marquita-type. .... \$1.00
- PAINTED DESERT** (Milliken 1942) (China Maid x Chosen) Tall well branched tan blend. Dull some seasons. A good parent, however. .... \$5.00
- PALE PRIMROSE** (Whiting 1946) (Happy Days x Midwest Gem) Ruffled primrose yellow. This should breed true pinks, and wonderful ruffling. .... \$2.00
- PAMELA** (Callis 1943) (Golden Bow x Gaynelle) Early enormous ruffled cream with a green center glow. Stock scarce. .... \$2.00
- PATRICE** (DeForest 1945) (Tiffany x Salar) New yellow plicata, wide, full and delicately marked. An ideal stem. H. M. 1946 .... \$5.00
- PATRICIA** (H. Sass 1939) (Sdlg: Alcazar x mesopotamica) x Wambliska: (same breeding as Purissima) All beruffled white. H. M. 1940 ..... .75
- PEACEMAKER** (Mitchell 1934) (by-product of plicata breeding) Porcelain white with lavender flush on falls. Beautiful under artificial light. .... .35
- PEACH GLOW** (Kleinsorge 1943) Idanha x sister sdlg: Far West x Junaluska) Attractive peach-pink blend. .... \$3.00
- PERSIAN PRINCE** (H. Sass 1941) (Autumn Flame x ?) Brilliant low-growing variegata. Falls a solid color. Nice. H. M. 1942 .. \$1.00
- PERU** (Milliken 1945) (Mount Cloud x sister to Fort Knox) Very large new blue. .... \$1.50
- PESHAWAR** (Schreiner 1937) (Ib-Mac x Sdlg: of chamaeiris: DB) Early red-purple (Mulberry), shaded brown, that you'll love. Half sister to Capitola. It has fertile pollen. I have one seedling from Peshawar x Golden Spike. .... .75
- PINK CAMEO** (O. Fay 1946) (Morocco Rose x Hall's 40-24) x D. Hall 42-07) The finest true pink, clear and clean. Scarce. H. M. 1946 ..... \$15.00
- PINK CLOUD** (O. Fay 1946) (Ethelwyn Dubuar x orchid sdlg) Pale Orchid pink said to be fine in clumps. .... \$6.00
- PINK IMPERIAL** (Weed 1939) (Buechley Giant x Imperial Blush) Gigantic pallida pink. O. K. in shade. .... .75
- PINK LACE** (Sass Bros. 1947) (Sdlg: Dore x Matula) x Flora Zenor) No lace. An orange-pink reticulated white on falls. Said, however, to be a good parent. Size of Flora Zenor. .... \$9.00



- PINK REFLECTION** (P. Cook 1942) (Fancy Free x Sandia) Pale flaring pink. Parent of Salamonie and should be good for pinks and blends. A. M. 1944. .... \$4.00
- PINK RUFFLES** (K. Smith 1940) (No-we-ta x Eros) Lavender ruffles should be its name. It makes lovely drifts. Always a sell-out. A. M. 1942 ..... \$1.00
- PINK SALMON** (Muhlestein 1948) (Spindrift x Golden Eagle) See 1948 Introductions. .... \$20.00
- PINK TOWER** (Muhlestein 1948) (Golden Eagle x Dr. Loomis' S. Q. 72) The largest clear "Shell" or "Flamingo" pink I have bred. C. of C. 1947. See 1948 Introductions \$20.00
- POLLY** (Dr. F. Williams 1944) (Sweet Alibi x 1C-7 (Purissima x Susiana) Small odd blue. Sets seed readily and may help to get the Oncocyclus blood infused into the Tall-bearded so that some day we have some with that true "Oncocyclus" look. .... \$1.00
- PRAIRIE FIRE** (Tompkins 1945) (Naranja x Golden Spike) Blend of flame-red, tan and copper. Should be a good parent for bright yellows, oranges and blends. .... \$15.00
- PRAIRIE SUNSET** (H. Sass 1939) (Sandlewood x Amitola) Lovely blend of peach, golden apricot and orange with some "real" gold for good measure. Lacks substance so plant in partial shade. Dykes Medal 1945. .... \$1.50
- PRECIOUS** (Mitchell 1945) (two sdlg plicatas) My favorite of the 1945 plicata introductions of Mitchell. A smaller Patrice. .... \$3.00
- PREMIER PEACH** (D. Hall 1946) (Sister to Overture) Larger than its sisters Overture and Dream Girl and a different shade--being a peach-salmon-pink. Difficult pod parent but pollen is potent. H. M. 1946 ..... \$12.00
- PRESENT** (White 1941) (Oncocyclus x bearded) I think this is White's masterpiece in the onco-breds. It has no branching but the individual flowers are magnificent and closely resembling the species oncocyclus. Tall stems White ground heavily veined orchid. H. M. 1947. .... \$5.50
- PRETTY PENNY** (DeForest 1943) (Sdlg: Jean Cayeux x Rameses) x Prairie Sunset.) Saved because of its blood, and it should really give fine seedlings if bred to large flowers like Golden Eagle, Nylon, Midwest Gem, Three Oaks or the like. .... \$2.00
- PRINCE OF ORANGE** (Kleinsorge 1940) (Far West x Naranja) One of the best of the Naranja-colored iris and a fine parent. A. M. 1944 ..... .75
- PRIORITY** (Lapham 1945) (Sdlg: Rameses x (M. A. Porter x Jerry) x Red Ray) Red rebloomer. H. M. 1947 ..... Sold out
- PRISCILLA** (Whiting 1942) (Purissima x Blue Waves) About as white as any iris on the market. Ordinarily not tall, but I have seen it well over three feet. A. M. 1947 .... \$1.00
- PROFFESSEUR MITCHELL** (Cayeux 1930) (David x Terpsichore: Korolkowi Violaacea x Susiana) Did you know it has this regelia and oncocyclus blood? None for sale--just wanted you to know.
- PURISSIMA** (Mohr-Mitchell 1927) (Argentina x Conquistador) The QUEEN parent herself. Old, but still somewhat of a classic. Parent of: Snow Flurry, Helen McGregor, Lady Boscawen, Priscilla, Anitra, and now the grandparent of that classic Helen Fitzgerald which I am introducing for Mr. Thorup this year. .... .35
- RADIANT** (Salbach 1936) (Klamath x Sherbert sdlg.) Showy, indeed, is this coppery-orange-red. H. M. 1938 ..... .50
- RADIANT COMMAND** (Muhlestein 1948) (Radiant x Royal Command) Quite bright clean neglecta. See 1948 Introductions. \$5.00
- RADIANT LADY** (Maxwell 1944) (Rosy Wings x Radiant) Improved Radiant coloring--said to be a self the color of Radiant's falls. .... \$3.00
- RAJAH BROOKE** (Norton 1945) (Matula x Garden Magic) Rich blended variegata. Would swear by this one to produce fine rich offspring in blends and reds. H. M. 1946. .... \$6.00
- RANGER** (Kleinsorge 1943) (Red sdlg 240:(Rebellion x King Tut) x (Purissima x Dolly Madison)) x (Garden Magic) A very worthwhile red. A difficult pod parent. A. M. 1946. .... \$4.00
- RANGITIKEI** (Stevens 1941) (Inspiration x Wellington) Dark carmine-purple. .... \$2.50
- RARE MARBLE** (Muhlestein 1947) (Bonanza x Tiffany) Brilliant yellow plicata trimmed in red. I think it particularly clean. .... \$7.50
- RED AMBER** (Loomis 1942) (?) Metallic rosy red-brown. Branching and height are ideal. .... \$2.00
- RED BONNET** (Gage 1939) (Dauntless x Red Sdlg) Fine wide red ..... .50
- RED GLEAM** (Lapham 1941) ((Bruno x Sherbert) x (Sass 30-40: Redwing x King Tut)) Quite red on established clumps, and a fine parent. H. M. 1941. .... \$1.00

- RED MAJESTY** (G. Douglas 1946) (from two sdlg's) Tall rose-red with yellow "heart." H. C. 1945. .... \$15.00
- RED RAY** (Lapham 1937) (Red Sails x Jerry) A red that produces re-bloomers. .... \$1.00
- RED TORCH** (H. Sass 1947) (Rouge Bouquet x Prairie Sunset) Golden tan standards and the falls a most vivid red with form and substance of the parent Rouge Bouquet. H. M. 1947. .... \$8.00
- RED VALOR** (Nicholls 1939) (Joycette x Red Robe) Red-purple of splendid form and character. Not the reddest, but quality every inch. .... \$2.50
- REDWARD** (P. Cook 1942) (From two sister seedlings from: Morning Splendor, Seminole and Cinnabar.) This is one of the reddest. H. M. 1945. .... \$5.00
- REDWYNE** (McKee 1945) (Sdlg: (Christabel x Teneya) x Janet Butler) x (Red Comet) Deep smooth mahogany red. H. M. 1945 ..... \$15.00
- REMEMBRANCE** (D. Hall 1942) (38-26 x May Day) Large pink blend. Very popular A. M. 1944. .... \$3.00
- REVEILLE** (Tobie 1944) (Clovelly x Melitza) Light pinkish self with Dominion form (and that's an asset) so it should breed fine pinks. H. M. 1945. .... \$6.50
- RIC** (White 1941) (Copper Lustre x Brown Betty) Good brown blend with 1/4 oncocyclus blood. .... \$1.00
- RILLA GABBERT** (Carpenter 1946) (?) One of the finest blends seen last year. Rose and gold with jewel-like freshness. H. M. 1946. .... \$20.00
- RIO ORO** (DeForest 1942) (Salar x Far West) Glowing light honey-tan. Wonderful parent for oranges and blends. .... \$2.00
- ROBINWOOD** (Kirkland Williams 1941) Showy bronze-brown. Overlooked..... \$1.00
- ROCKET** (Whiting 1945) (Sdlg: Sandlewood x Naranja) x Golden Spike) Nobody overlooks Rocket. Its brilliant orange yellow hits you right in the eye. It has every good quality. A. M. 1947 ..... \$20.00
- ROSE TOP** (H. Sass 1941) (Tiffany x 136-34: Rameses x El Tovar) Huge, tall showy plicata. Standards almost pure rose. .... \$6.00
- ROSY RUFFLES** (C. Rees 1946) (Snow Flurry x Far West) Rosy lavender-pink. Should be a remarkable parent for pinks, blends, whites, and of course all shades of blue and lavender. .... \$8.00
- ROUGE BOQUET** (Whiting 1941) (Matula x Garden Magic) Richly colored dark red. A grand parent, substance and form are good. .... \$1.50
- ROYAL SCOT** (D. Hall 1944) (Orloff x Elsa Sass) Very heavily marked plicata which from a distance appears a red self. H. M. 1944. .... \$3.00
- RUBIENT** (Whiting 1942) (Valor x Winneshiek) "Amigo done in red" is the oft-given description. Tall. Makes a nice clump .. \$2.00
- RUBY GLOW** (Schriner 1941) (Grace Sturtevant x Graminea:(D. B.)) This is a true intermediate. Rich ruby-red. .... \$1.00
- RUSSET WINGS** (Wills 1946) (Old Parchment x Stardom) Smoothly blended flaring iris of Gold, copper and apricot giving the effect of a self. H. M. 1946. .... \$15.00
- SABLE** (P. Cook 1938) (From sdlg's from: Inocenza, Blue Boy, Cinnabar, Seminole) Tall, dark and handsome black-purple. A wonderful parent for dark iris. A. M. 1940 ..... \$1.00
- SALAMONIE** (P. Cook 1946) (Majenica x Pink Reflection) Light, but richly colored, pink blend with the best qualities of its two parents. One of the best of the 1946 introductions. H. M. 1946. .... \$12.50
- SALMONETTE** (J. Sass 1946) ((Dore x Matula) x (36-43 x Miss California )) Smallish pink-salmon said to be very beautiful. H. M. 1947 ..... \$20.00
- SALMON SPLENDOR** (Lapham 1941) (Nowe-ta x Sdlg: Midgard x Aphrodite) Salmon-pink pallida (24 Chromosomes) ..... \$1.00
- SAN FRANCISCO** (Mohr-Mitchell 1927) Large plicata. 1927 Dykes Medal. .... .55
- SANTA CRUZ** (Mitchell 1945) Variegata with veining in falls. .... \$1.50
- SARAH KINISH** (D. Kinish 1944) (Winneshiek x Sierra Blue) Light bi-colored blue Falls edged lighter. .... \$7.50
- SEADEEP** (Thole 1937) (Buto x Santa Barbara) Deep marine-blue bi-color. Very fertile pollen on Wm. Mohr. .... .55
- SEA LARK** (Muhlestein 1946) (Brunhilde x Sable) Large violet-blue with flush of purple on both standards and falls. Good form. This can't be confused with any other iris. H. M. 1947 ..... \$15.00
- SEDUCTION** (Cayeux 1933) (Arlinde x Sdlg: Ensorceleur x ?) Large rounded plicata parent of Suzette. .... .50

- SEQUATCHIE* (Caldwell 1944) ((Yucatan x Jean Cayeux) x (Cellophane x Blue sdlg.)) One of the brightest blends in the garden. H. M. 1944. .... \$8.00
- SERENATA* (Milliken 1944) (Sister to Fort Knox x Sdlg: China Maid x sdlg of Dauntless) Attractive pink blend. .... \$1.00
- SHANNOPIN* Pillow 1940) (Redwing x Yellow sdlg) Yellow standards, pink falls. Produces pinks and pink-amoenas. .... \$1.25
- SHARKSKIN* (G. Douglas 1942) (Cathedral Dome x Stella Polaris) Dazzling white with an orange-yellow beard. A. M. 1946. .... \$4.50
- SHARON KAY* (DeForest 1946) (Morocco Rose x Lorie May: Lighthouse x Salar) Large, smooth light lilac. White beard tipped orange inside. .... \$10.00
- SHERIFFA* (White 1942) (Regelia derivative x "oncobred.") Metallic mulberry purple. A. M. 1936. .... \$1.00
- SHINING WATERS* (Essig 1953) (complicated parentage) Still a fine blue, and a good parent. A. M. 1936. .... .40
- SHISHALDIN* (DeForest 1944) (Sister to Casa Morena) Beautiful tall golden-brown blend. .... \$2.00
- SIERRA BLUE* (Essig 1952) (Souv. de Mme. Gaudichau x Santa Barbara) Tall flaring blue. Parent of Southern Pacific and grandparent of Blue Rhythm. Dykes Medal 1955 ..... .55
- SIERRA PRIMROSE* (Essig 1946) (Sdlgs from W. R. Dykes, New Albion, Primavera, Alcazar) x Western Skies) Cream-primrose. .. \$5.00
- SIERRA SNOW* (Kleinsorge 1939) (Cream Sdlg: Purissima x Rameses) x Far West) Fine, well-branched white. Should be a good parent for yellows, creams, blends and pinks ..... .75
- SILVER SUSIE* (DeForest 1942) (Sdlg: Alta California x ?) x Sierra Blue) Very tall well branched white. Fertile pollen on Wm. Mohr seedlings. .... \$2.00
- SKY MAID* (M. Walker 1944) (Purissima x Pacific) Flaring blue. A fine parent for blues and whites. H. M. 1945 ..... \$2.00
- SLEEPY HOLLOW* (Milliken 1944) (Royal Salute x The Black Douglas) A rich bi-purple. should produce good dark seedlings. .... \$1.00
- SMOLDER* (Nicholls 1937) (Valor x Sdlg: Souv. de Mme Gaudichau x Alcazar) x (Morning Splendor)) Pollen parent to Storm King. Red Purple of rich quality. Tall and late. .60
- SNOQUALMIE* (Brehm 1938) (Wm. Carey Jones x white Mitchell Sdlg) Good inexpensive cream, and we all know creams are valuable foils for the somber dark purples and reds. .... .75
- SNOW CARNIVAL* (Graves 1942) (Santa Barbara x Gudrun) Huge flaring white everyone wants. A. M. 1944. .... \$4.00
- SNOW FLURRY* (C. Rees 1959) (Purissima x Thais) Nothing so personable as this ruffled blue-white. Snow Flurry is a remarkable parent, and sets seeds readily. No pollen. A. M. 1941. .... \$1.50
- SNOW MAIDEN* (Chadwick 1935) Early border iris blooming right after most of the dwarfs have reached their peak. .... .55
- SNOW VELVET* (H. Sass 1942) (Claribel x Tiffany) A white with a lot of lemon-yellow in it. A clean flower. H. M. 1942. .... \$2.50
- SOLID MAHOGANY* (J. Sass 1944) (City of Lincoln x 38-13) Deep impressive mahogany self. A. M. 1947. .... \$7.50
- SONATINE* (Tompkins 1946) (Sdlg: Jean Cayeux x Ormohr) x Aztec Copper) Blend of lilic and pinkish-copper tones. May be a most interesting parent. .... \$7.00
- SONG OF GOLD* (Essig 1937) (Complicated) Dependable yellow with delightful fragrance. .... .75
- SONRISA* (DeForest 1942) (Her Grace x Prairie Sunset) Delicate pink blend with golden undertone. H. M. 1945. .... \$4.00
- SOQUEL* (Reinelt 1940) (Wm. Mohr x Sunol) Lighter than Capitola. Will set seed occasionally. .... .75
- SORREL TOP* (Mitchell 1945) (Palo Alto: Sherbert x San Francisco) x Orloff) Top almost a solid brown-rose, falls edged same color on a white ground. Well branched tall stem. A honey. H. M. 1947. .... \$3.00
- SORRENTE* (Cayeux 1937) (?) Blue blend of promise. Scarce. .... \$1.50
- SOUSUN* (Essig 1945) (Sdlgs from: Firefall, Kashmir White, Grace Sturtevant, Sombrero, Flame Bearer) x Lilamani) Lovely lemon yellow. Long blooming. H. M. 1945. .... \$7.50
- SOUTHERN PACIFIC* (W. Taylor 1942) (Sierra Blue x El Capitan) Large flaring medium violet-blue. H. M. 1947. .... \$2.00
- SOUTH SEAS* (Essig 1947) (Mount Washington x Sierra Blue) Said to be larger and bluer than Shining Waters. Gold reticulations. .... \$10.00

- SPANISH PEAKS** (Loomis 1947) (Sdlg: (Purissima x white sdlg of Dominion) x Sdlg.) Remarkable new pure white. H. C. 1946. \$20.00
- SPARKLING FROST** (Milliken 1939) (Purissima x Easter Morn) Very pale frosty light blue. A fine parent. .... .50
- SPINDRIFT** (Loomis 1944) (Morocco Rose x Sea Shell) Deep shell pink with tangerine beard. The parent of my 1948 introduction: Pink Salmon, and many other promising seedlings. H. M. 1945. .... \$5.00
- SPOTLESS** (H. Sass 1939) (Hoogiana x Elf Queen) Cream-white. Early. .... \$1.00
- SPRING CHIMES** (D. Hall 1942) (Bermuda Sand x May Day) Showy big golden russet self. .... \$1.00
- SPRING IDYL** (Lapham 1939) (Sdlg: Eloise Lapham x Marian Lapham) x Sdlg: Wild Rose x Williamson Sdlg) Delightfully delicate apple-blossom pink. A pallida (24 chromosomes) Lovely indoors under artificial light. .50
- SPUN GOLD** (Glutzbeck 1940) (Sdls from: W. R. Dykes, Cream Sdlg, Mrs. V. West, Depute Nomblot, Vert Galant) x Depute Nomblot) A real achievement to produce the first velvety yellow. Dykes Medal 1944. .... \$2.50
- STAG AT EVE** (Muhlestein 1948) (Chosen x Prairie Sunset) Large russet-tan self sprinkled with gold dust. See 1948 Introductions. \$10.00
- STARLESS NIGHT** (J. Sass 1941) (From sister seedlings: The Red Douglas x red sdlg) Very dark red-purple with a gold beard. Grand. H. M. 1943 ..... \$1.50
- STATEN ISLAND** (K. Smith 1947) (The Red Admiral x City of Lincoln) Brilliant new variegata. As a parent should give fine variegatas, neglectas and possibly good purples and lavenders since it is a great-grandchild of both Frieda Mohr and Easter Morn. .... \$15.00
- STELLA VIOLA** (Snyder 1945) (?) Brilliant rich deep violet. .... \$4.00
- STORM KING** (Nicholls 1940) (Mata Hari x Smolder) By the way, Smolder is a sister to Mata Hari. See what line-breeding (F2) does. The finest late dark flaring purple. A wonderful parent. H. M. 1941. .... \$2.50
- STRATOSPHERE BLUE** (Lyell 1946) (Missouri x blue sdlg) Highly recommended as one of the bluest and fine in every way. .... \$10.00
- SUEZ** (Schreiner 1945) (Wm. Mohr x Madam Louis Aureau) Clearly showing both its oncocyclus and plicata blood. Easy parent. .. \$7.50
- SUKEY OF SALEM** (Nesmith 1946) (Buccan-  
cer x Prairie Sunset) A rich blend that badly  
water-marked here, but otherwise was fine. H.  
M. 1946. .... \$12.50
- SULPHUR KING** (Gage 1945) (W. R. Dykes  
x Naranja) Light cream-yellow, and falls flush-  
ed mauve. Should breed good yellows and oran-  
ges. .... \$1.00
- SULTAN'S ROBE** (Salbach 1945) (Sdlg from:  
Anne Marie Cayeux, Alta Calif., Happy Gift,  
Miss Calif., Gold Top, King Midas) Rich deep  
blend of copper, gold, old rose and red. Broad  
of all parts. Produces seedlings of delightful  
form and substance: H. M. 1946. .... \$7.50
- SUNNY RUFFLES** (Waters 1943) (Gudrun x  
Jean Cayeux) Heavily ruffled lemon yellow  
chrome--falls have a deeper border. Nice. \$3.00
- SUNSET HAZE** (Milliken 1944) (Sister to  
Serenata) Have you ever seen the haze over  
the ocean at sundown? Unusual but beautiful.  
..... \$1.00
- SUNSET SERENADE** (J. Sass 1943) (Golden  
Age x Prairie Sunset) Huge more golden apr-  
icot than Prairie Sunset. Small rhizomes which  
do not bloom in the spring, nearly always bloom  
during the summer. It has re-blooming tenden-  
cies, but I wouldn't call it "sensational." A.  
M. 1945. .... \$4.00
- SUNSHINE** (D. Hall) Rich deep yellow. Vigor-  
ous. .... \$2.50
- SUZETTE** (Knowlton 1945) (Seduction x Tif-  
fany) Lightly marked creamy-yellow plicata.  
H. M. 1945. Scarce. .... \$20.00
- SWEET JANICE** (Gage 1946) (Copper Piece  
x Arethusa) Taller, deeper Radiant. .... \$1.50
- SYLVAN BELLE** (Peck 1943) (Gloriole x  
White Sdlg.) Mr. Gage's favorite dependable  
white. .... \$5.00
- SYLVIA MacDONALD** (Aylett 1942) (Naran-  
ja x Happy Days) Large orange-yellow. Should  
breed good orange-yellows. .... \$5.00
- SYLVIA MURRAY** (Norton 1944) (Great Lakes  
x Shining Waters) A masterpiece in the light  
blues. H. M. 1946. .... \$7.50
- SYMBOL** (White 1941) (Naranja x Fiesta)  
Large full-bodied bi-orange and yellow. Falls  
deep with golden brown brushed on each side  
of haft. .... \$1.00
- TANAGER** (Gage 1943) (Christabel x Red Bon-  
net) Red that should make a red breeder. .50

- TEA ROSE (Whiting 1944) (Matula x China Maid) Neatly formed pink blend. Sister to Mexia and Three Oaks. H. M. 1945. .... \$4.00
- TENAYA (Essig 1933) (Sdlg: Alcazar x Souv. de Mme. Gaudichau) x Cardinal) Rich purple. .... .55
- THE ADMIRAL (D. Hall 1941) (Sensation x Sdlg: Selene x Wambliska) Lovely blue that takes the weather. A. M. 1944 ..... \$1.00
- THE CAPITOL (Maxwell 1944) (La Gloria x Gloriola) Huge white with bright, prominent orange beard. H. M. 1946. .... \$7.50
- THE GUARDSMAN (Grant 1939) (Winneshiak x ?) Dusty mulberry pink, falls edged lighter. Unusual. .... \$5.50
- THE ORIOLE Schreiner 1947) (Spokane x El Tovar) Variegata with goldenrod yellow standards and falls of rich blackish maroon. .... \$5.00
- THE RED DOUGLAS (J. Sass 1937) (29-12: (sister to Redwing, x Cardinal) x Joycette) Large red-purple. Dykes Medal 1941. .. \$1.00
- THREE CHEERS (P. Cook 1945) (Wabash x Sdlg: (Susan Bliss x Morning Splendor) x amoena Sdlg) Large clear neglecta, high branched. H. M. 1946. .... \$9.00
- THREE OAKS (Whiting 1943) (Matula x China Maid) Lovely and striking blend of pink, copper and lavender (metallic) on falls. A wonderful parent for brilliant things. H. M. 1945. .... \$4.00
- TIFFANJA (DeForest 1942) (Naranja x Tiffany) Delightful yellow plicata everyone wants. Extremely fast of increase. A. M. 1946. .... \$2.00
- TIFFANY (H. Sass 1938) (90-51 common red: (King Tut x Morning Splendor) x ?) The remarkable plicata parent, but it throws reds, blends and purples too. A. M. 1943. .... .50
- TIP TOP (D. Hall 1947) (two sdlgs) Looks like an upside-down amoena but is really a plicata. Standards purple-falls white with light markings. .... \$10.00
- TISHOMINGO (Caldwell 1942) (?) Lovely large wisteria blue. A. M. 1944. .... \$4.50
- TIS MORN (Milliken 1942) (?) Yellow with haze of lavender on falls. .... .50
- TOBACCO ROAD (Kleinsorge 1942) (Aztec Copper x 228: Far West x Jean Cayeux) Sensational is this copper tobacco brown, and a wonderful parent. A. M. 1946. .... \$6.00
- TOP HILLY (White 1938) Pearly white with lemon yellow edging on all petals. 1/4 oncocylus. Fertile pollen. .... .75
- TOUSSAINT L'OVERTURE (Schreiner 1940?) (? sister to Peshawar?) Early hybrid of red-mulberry coloring. .... \$1.00
- TOWER OF JEWELS (Salbach 1941) (Plurabelle x Sdlg: Bronze Beacon x San Francisco) Very tall, showy yellow blend. Should breed good blends and plicatas. .... .75
- TREASURE ISLAND (Kleinsorge 1937) (Cream Sdlg: Purissima x Dolly Madison) x Jean Cayeux) Clean yellow with light area in falls. Parent of Old Parchment, Copper Cascade and Grand Canyon. A. M. 1945. .... .50
- TREVA (DeForest 1945) (Rio Oro x Sdlg: Sandlewood x Amitola) Large rich golden-apricot. Temperamental grower here. H. M. 1946. .... \$7.50
- TUNISIAN GOLD (Tompkins 1947) Large golden-brown. Hafts antique brown. Scarce. .... \$15.00
- TYRIAN BEAUTY (Gage 1940) (Lady Marion x Rosy Wings) Light reddish purple self. .50
- UTAH FIESTA (Muhlestein 1948) (Fiesta x Dubrovnik) Orange blend with lavender flush in falls. See 1948 Introductions. .... \$5.00
- VAL (E. Brenan 1944) (Mauna Loa x Brown Betty) Standards lavender, falls darker with Brown Betty veining (showing Susiana blood, no doubt) A light neglecta that may produce amoenas. .... \$2.00
- VATICAN PURPLE (Whiting 1943) (Missouri x Mata Hari) A really different purple of fine form and finish. Should breed dandy blues and dark purples. .... \$4.00
- VEISHEA (Whiting 1945) (Matula x Sdlg 361: (Matula x Summer Tan) Showy blend not unlike Three Oaks. A remarkable breeder. H. M. 1946. .... \$1.50
- VELVET KING (Harned 1938) (Sdlg: Bruno x Sherbert) x Sdlg: Redwing x King Tut) A good red, and a good pedigree for reds. \$1.00
- VESTAL VELVET (T. Williams) (Blue Velvet x Sdlg 401) Deep violet self. .... \$1.00
- VICE REGAL (Miles 1946) (?) Bronzy red-purple. Extreme depth and richness make this a masterful color. H. M. 1947. .... \$4.00
- VIIIPURI (M. Williamson 1940) (Dorothy Dietz x Cantabile) Ruffled amoena sister seedling to Wabash. Might prove a most valuable parent. .... .75

- VIOLET SYMPHONY (K. Smith 1940) (Easter Morn x Violet Crown) Wide, full violet self of good form. A wonderful parent for violets and whites. A. M. 1945. .... \$2.00
- VISION FUGITIVE (Wareham 1942) (Sdlgs from Trojana x Dominion) Large (really extra large) creamy-white. H. M. 1945. .... \$7.00
- VISION OF MIRZA (DeForest 1944) (Tiffany x Salar) Sister to Patrice, but this one is brushed and the falls are more the shape of Tiffany's. Will be an interesting parent for blends and plicatas. .... \$3.00
- WABASH (M. Williamson) (Sister to Viipuri) Still "the" Amoena. White standards, purple falls bordered white. Dykes Medal 1940. .75
- WAKARUSA (Lapham 1941) (Mary Geddes x Red Gleam) Brilliant orange and vivid red poured together. .... \$1.50
- WEE ADMIRAL (W. Marx 1947) (Cryso-ro x Charon: R. C.) Intense dark red purple with semi-reflexed falls. A dwarf 5" high. .... \$1.50
- WEST POINT (Nicholls 1939) (Valor x Lucero) A late bi-blue. Swell. .... .75
- WHITE ALONE (Horton 1940) (Purissima x 432: Midgard x ?) Tall, large white of quality. Early. .... .75
- WHITE RUFFLES (C. Taylor 1947) (Snow Flurry x Princess of Brentwood) Ruffled white. H. M. 1947. .... \$15.00
- WHITE SPIRE (Milliken 1944) (Lost) Very large white. Weak stems here. .... \$1.00
- WHITE WEDGEWOOD (Grant 1943) (Mount Cloud x blue bearded blue sdlg) Ruffled heavy white with blue-cast beard. A. M. 1945. .... \$7.00
- WILD HONEY (Whiting 1946) (Jonquil x Gilt Edge) Rich golden-tan. .... \$5.00
- WILD ORCHID (Kellogg) (?) Orchid self. .... .75
- WILLIAM A. SETCHELL (Brehm 1938) (Purissima x Dolly Madison) Simply gigantic bi-purple. Heavy substance for such a large flower. .... .75
- WILLIAM MOHR (Mohr-Mitchell 1925) (Parisiana x gatesii) The violet hybrid everyone wants and everyone tries to breed. .... .55
- WINSTON CHURCHILL (Stevens 1944) (Achilles x Mareschal Ney) Close to Crimson. A very deep red. .... \$15.00
- WINTER CARNIVAL (Schreiner 1941) (Violet Crown x Easter Morn) Large white the shape of Violet Crown. H. M. 1942. .... \$1.50
- WORTHINGTON (P. Cook 1943) (?) Quality rosy-red. .... \$5.50
- W. R. DYKES (Dykes 1926) (? undoubtedly descended from Moonlight, Perdita and possibly Kashmir White) This was the yellow break to produce big yellows. Has produced a wonderful array of descendents too numerous to mention. Slow grower. Scarce ..... .50
- ZANTHITE (Callis) (Happy Days x Missouri Gold: Golden Harvest x W. R. Dykes) Deep yellow self with blue sheen on falls. Ruffled. .... \$5.00
- YELLOW JEWEL (K. Smith 1939) (W. R. Dykes x Mareschal Ney) Rich, odd sulphur yellow. .... \$1.00
- YUMA (Mitchell 1945) (Sdlgs from Seduction, Bronze Beacon, San Francisco, Orloff and Siegfried) Tall yellow plicata marked red, purple and brown. .... \$5.00
- ZEBULON (E. Callis 1942) (Ormohr x Sir Knight) Dark bi-blue with fertile pollen. .... \$2.00
- ZIA (White 1945) (Oncobred) Dwarf hybrid a bit dirty and odd. .... .50
- ZWANENBURG (Denis 1912) (Lutescens Aurea x Susiana) Odd, early, tan-yellow blend showing its Oncocyclus blood in shape of flowers. Has fertile pollen on dwarfs (at least for me.) .... .25

#### VARIOUS HYBRIDS

(Eupogocyclus, Eupogoregia and Miscellaneous bearded)

- BED TIME (White) (Oncobred) ..... .75
- BELADI (White) Oncobred) ..... \$1.00
- COGETTE (White) (Charon: R. C.) x Susiana) ..... .75
- CONGRES (CAYEUX) (EUPOGOCYCLUS X Pogocyclus) ..... .50
- COQUETRY (SCHREINER) (Sdlg: gatesii x lortetii) x Midwest) ..... \$2.00
- ENCHANTED (White) (Oncobred) ..... \$2.00
- MOZO (White) (Oncobred) ..... .75
- MUSTAPHA (White) (Oncobred) ..... .75
- NEAR EAST (White) (Oncobred) ..... \$1.50

(Many others scattered throughout the catalogue: All Wm. Mohr derivatives and a host of others with oncocyclus and regelia blood.)

## DWARF BEARDED IRIS



I have about 25 varieties of older dwarf iris, some of which may be had for 25c each. Here are a few:

Alba, Azurea, Citrea, Cyanea, Jean Siret, Orange Queen, Tom Tit, Zua, Tony, Yellow Frills Sound Money, Souv. De L. Cavagnac (reblooms), Ultra, Equinox, Alpin, Aurea Maculata, Gorgeous, Judy, Nugget, Purple Beauty, Petite Amie, Reichenbachii, Snow Cup, Sonny, and of course my new introduction: Little Elsa priced at \$2.00 each. There seems to be a growing interest in the hybridizing of dwarf iris and it offers a grand opportunity. They need much improving in form, and color range should be widened. Pollen of the dwarfs can be held over (up to 6 weeks) and used on the Tall-bearded iris to produce true intermediates, another class, now badly neglected, but important if the iris season is to be extended through the dwarfs, to Intermediates, to Tall Bearded and the later Spurias, etc.

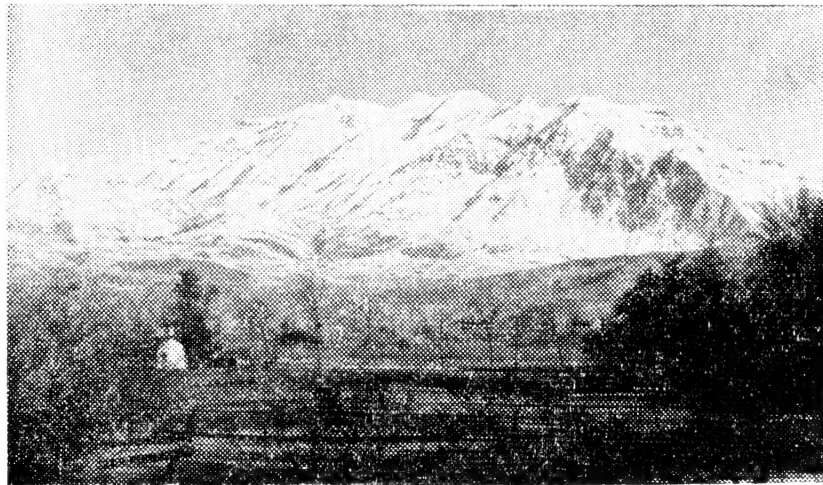
### JOIN THE AMERICAN IRIS SOCIETY

444 Chestnut Street — Nashville 10, Tennessee

Dues \$5.00 per year. The four quarterly bulletins will keep you "up-to-date" on iris culture and the latest happenings.

The new book: *The Iris An Ideal Hardy Perennial*, written and published by members of the American Society, is a gem which everyone should have. Paper bound \$1.50. Permanent binding \$2.50.

May be had from above address, or send your order to me.



MOUNT "TIMP"

## TERMS OF SALE

Cash with order. Postage paid on all orders over \$5.00. Orders for less add 25c to cover packing and postage.

## SHIPPING DATES

Our rhizomes mature here after July 15th, however, some growers like plants earlier. I will ship starting July 1st, but the rhizomes at that time are smaller. We cannot ship before this date. I will appreciate it if request for orders are sent early. Many of our plant markers, or labels, are removed after October first, so I hope you will make your plans before that date. We like to send out good rhizomes which we think will bloom the first year. We cannot always guarantee a rhizome will bloom. We are very often fooled by both large and small rhizomes ourselves --- much depends on the soil they are planted in, the amount of plant food available, the water and length of growing season, etc.

## OUR POLICY

I prefer not to make collection offers. My offers last year were too sensational for good business, but I like to give every customer good value. My space is limited so some varieties will sell out early, but other varieties, perhaps very new ones, will be a little crowded and since I cannot keep much stock here, I will send along extra plants of fine varieties, but I prefer that you list a number of alternates which I may use in substituting should any variety be sold out, then I will use your list of alternates to send extra or premium iris and they will be iris you especially want, for I cannot possibly guess what you may have in your garden. I have made some good and some very bad guesses and I prefer not to have to guess.

20% discount will be allowed on orders over \$10.00 not listing alternates.

## OFFER OF SEEDLINGS

Again I will offer some of my pink numbered seedlings at \$3.00 each. These are good, but will not be named. Sister seedlings to pinks at \$1.00 each with pedigree furnished. I will have seedlings in other colors, as well, at \$1.00 each pedigrees furnished so give me an idea what you want as to color, pedigree, etc. No discount on seedlings, or iris seed.

## TALL BEARDED IRIS SEED

Seed from select parents in any color ..... 5c each.

Seed from my deepest pink, Pink Formal, (used either way) ..... 10c each.

Seed from Elmohr, Ormohr or Suez ..... 10c each.

Chance pods (probably thrip pollinated, so would be selfed) from good named varieties (pod parent given), and selected seedlings at ..... 2c each.

Seeds will be sent postpaid about September 1st. Count will be good.

Seedlings are easy to grow (but lots of work.) If seed is planted in a cold frame in October in a good light sandy, but rich soil, and transplanted before the tall bearded iris start to bloom many of them will bloom the following spring, if well cared for, fertilized, and watered regularly. To insure germination the seed beds should be kept moist in early spring as soon as the snows or rains are gone. I use wood stakes planed and marked with permanent India Ink (black) for my markers. The crosses should be well marked and breeding records kept accurately (It's more fun that way) so you know what you are doing and where the good ones come from. India Ink is also useful for wood or plastic markers for the garden in general.

## VISITORS WELCOME

Visitors are always welcome. You may find me in my overalls, but I have found no other way to do this work, I love so well, and look even half-way respectable. Our peak bloom is May 17th to 30th.





